

Summary

Production Name	CD203c Rabbit Polyclonal Antibody
Description	Rabbit Polyclonal Antibody
Host	Rabbit
Application	WB,IHC,IF,ELISA
Reactivity	Human,Mouse,Rat

Performance

Conjugation	Unconjugated
Modification	Unmodified
Isotype	IgG
Clonality	Polyclonal
Form	Liquid
Storage	Store at 4°C short term. Aliquot and store at -20°C long term. Avoid freeze/thaw cycles.
Buffer	Liquid in PBS containing 50% glycerol, 0.5% BSA and 0.02% New type preservative N.
Purification	Affinity purification

Immunogen

Gene Name	ENPP3 ENPP3; PDNP3; Ectonucleotide pyrophosphatase/phosphodiesterase family member 3;
Alternative Names	E-NPP 3; Phosphodiesterase I beta; PD-Ibeta; Phosphodiesterase I/nucleotide pyrophosphatase 3; CD203c
Gene ID	5169.0
SwissProt ID	O14638.The antiserum was produced against synthesized peptide derived from the Internal region of human ENPP3. AA range:281-330

Application

Dilution Ratio	WB 1:500 - 1:2000. IHC-p: 1:100-300 ELISA: 1:20000.. IF 1:50-200
Molecular Weight	100kD

Background

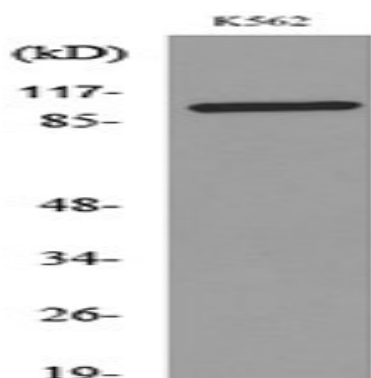
The protein encoded by this gene belongs to a series of ectoenzymes that are involved in hydrolysis of extracellular nucleotides. These ectoenzymes possess ATPase and ATP pyrophosphatase activities and are type II transmembrane proteins. Expression of the related rat mRNA has been found in a subset of immature glial cells and in the alimentary tract. The corresponding rat protein has been detected in the pancreas, small intestine, colon, and liver. The human mRNA is expressed in glioma cells, prostate, and uterus. Expression of the human protein has been detected in uterus, basophils, and mast cells. Two transcript variants, one protein coding and the other non-protein coding, have been found for this gene. [provided by RefSeq, Oct 2015],catalytic activity:A dinucleotide + H(2)O = 2 mononucleotides.,catalytic activity:Hydrolytically removes 5'-nucleotides successively from the 3'-hydroxy termini of 3'-hydroxy-terminated oligonucleotides.,cofactor:Binds 2 divalent metal cations per subunit.,enzyme regulation:At low concentrations of ATP, a phosphorylated active site intermediate is formed which inhibits further ATP hydrolysis.,function:Cleaves a variety of phosphodiester and phosphosulfate bonds including deoxynucleotides, nucleotide sugars, and NAD.,induction:Up-regulated by stimulation by allergen or by cross-linking with IgE. The IgE-mediated activation is enhanced by tetradecanoyl phorbol acetate (TPA), a stimulator of the PKC pathway, and inhibited by the P13 kinase inhibitors, LY294002 and wortmannin. Up-regulated in invasive bile duct cancers.,PTM:It has been suggested that the active SMB domain may be permitted considerable disulfide bond heterogeneity or variability, thus two alternate disulfide patterns based on 3D structures are described with 1 disulfide bond conserved in both.,PTM:N-glycosylation is necessary for correct trafficking to the apical surface, but is not the apical targeting signal.,similarity:Belongs to the nucleotide pyrophosphatase/phosphodiesterase family.,similarity:Contains 2 SMB (somatomedin-B) domains.,subcellular location:Located to the apical surface in intestinal and kidney epithelial cells. Located to the cell surface of basophils, and to the apical plasma membrane of bile duct cells. Secreted in serum, and in lumen of epithelial cells.,tissue specificity:Expressed in bile ducts, prostate, uterus and colon. Exclusively expressed on basophils, mast cells and their progenitors.,

Research Area

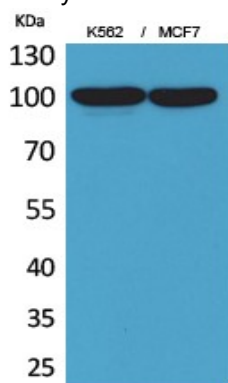
Purine metabolism;Starch and sucrose metabolism;Riboflavin metabolism;Nicotinate and nicotinamide metabolism;Pantothenate and CoA biosynthesis;

Image Data

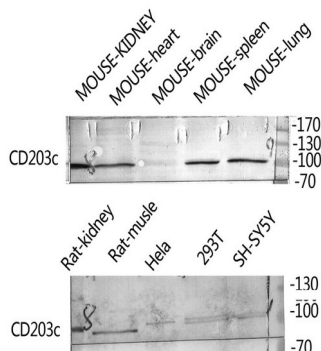
Product Name: CD203c Rabbit Polyclonal Antibody
Catalog #: APRab08273



Western blot analysis of lysate from K562 cells, using ENPP3 Antibody.

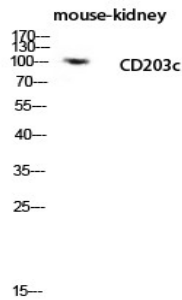


Western Blot analysis of K562, MCF7 cells using CD203c Polyclonal Antibody. Antibody was diluted at 1:2000. Secondary antibody was diluted at 1:20000

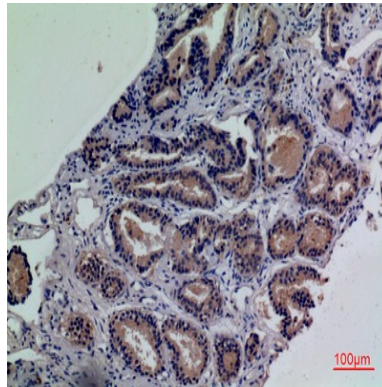


Western Blot analysis of rat-kidney hela 293T SH-SY5Y MOUSE-KIDNEY MOUSE-SPLEEN MOUSE-LUNG using ENPP3 Polyclonal Antibody. Antibody was diluted at 1:2000. Secondary antibody was diluted at 1:20000

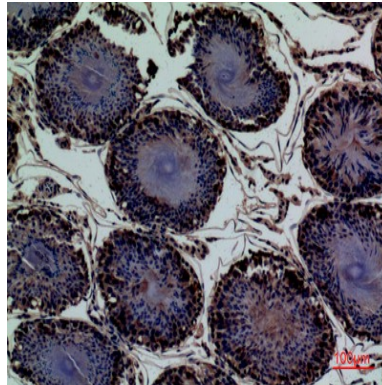
Product Name: CD203c Rabbit Polyclonal Antibody
Catalog #: APRab08273



Western blot analysis of mouse-kidney lysis using CD203c antibody. Antibody was diluted at 1:2000. Secondary antibody was diluted at 1:20000

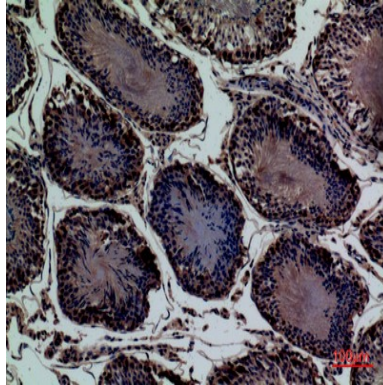


Immunohistochemical analysis of paraffin-embedded human-prostate-cancer, antibody was diluted at 1:100



Immunohistochemical analysis of paraffin-embedded rat-testis, antibody was diluted at 1:100

Product Name: CD203c Rabbit Polyclonal Antibody
Catalog #: APRab08273



Immunohistochemical analysis of paraffin-embedded rat-testis, antibody was diluted at 1:100

Note

For research use only.