
Summary

Production Name	CD200 Rabbit Polyclonal Antibody
Description	Rabbit Polyclonal Antibody
Host	Rabbit
Application	WB,IHC,ELISA
Reactivity	Human,Rat,Mouse

Performance

Conjugation	Unconjugated
Modification	Unmodified
Isotype	IgG
Clonality	Polyclonal
Form	Liquid
Storage	Store at 4°C short term. Aliquot and store at -20°C long term. Avoid freeze/thaw cycles.
Buffer	Liquid in PBS containing 50% glycerol, 0.5% BSA and 0.02% New type preservative N.
Purification	Affinity purification

Immunogen

Gene Name	CD200
Alternative Names	CD200; MOX1; MOX2; My033; OX-2 membrane glycoprotein; CD200
Gene ID	4345.0
SwissProt ID	P41217.The antiserum was produced against synthesized peptide derived from the Internal region of human CD200. AA range:171-220

Application

Dilution Ratio	WB 1:500 - 1:2000. IHC: 1:100-1:300. ELISA: 1:20000..
Molecular Weight	31kD

Background

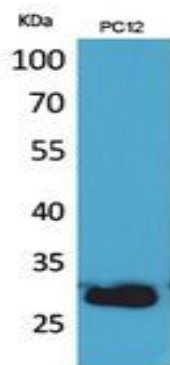
Product Name: CD200 Rabbit Polyclonal Antibody
Catalog #: APRab08271



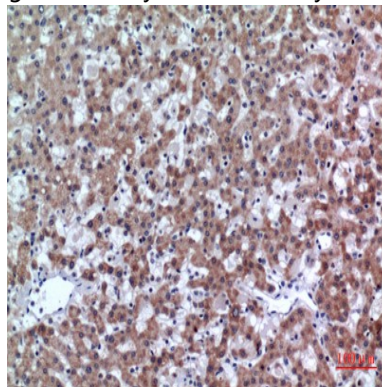
This gene encodes a type I membrane glycoprotein containing two extracellular immunoglobulin domains, a transmembrane and a cytoplasmic domain. This gene is expressed by various cell types, including B cells, a subset of T cells, thymocytes, endothelial cells, and neurons. The encoded protein plays an important role in immunosuppression and regulation of anti-tumor activity. Alternative splicing results in multiple transcript variants encoding different isoforms. [provided by RefSeq, Jan 2016],function:Costimulates T-cell proliferation. May regulate myeloid cell activity in a variety of tissues.,similarity:Contains 1 Ig-like C2-type (immunoglobulin-like) domain.,similarity:Contains 1 Ig-like V-type (immunoglobulin-like) domain.,subunit:Interacts with CD200R1.,

Research Area

Image Data

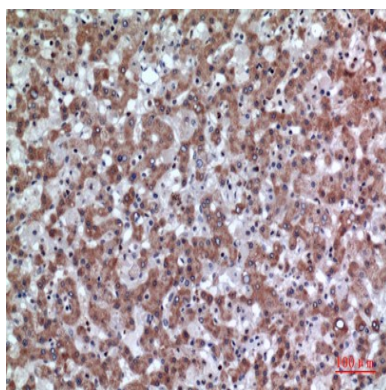


Western Blot analysis of PC12 cells using CD200 Polyclonal Antibody.. Secondary antibody was diluted at 1:20000

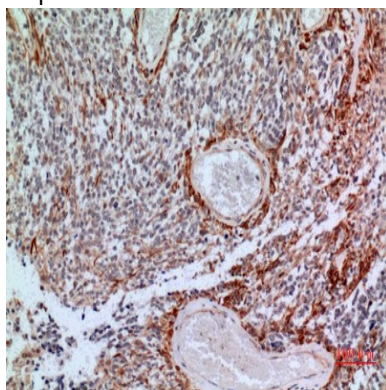


Immunohistochemical analysis of paraffin-embedded human-liver, antibody was diluted at 1:100

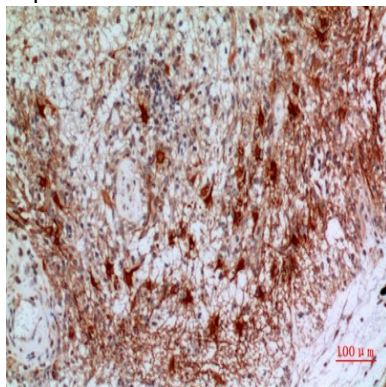
Product Name: CD200 Rabbit Polyclonal Antibody
Catalog #: APRab08271



Immunohistochemical analysis of paraffin-embedded human-liver, antibody was diluted at 1:100



Immunohistochemical analysis of paraffin-embedded human-brain, antibody was diluted at 1:100



Immunohistochemical analysis of paraffin-embedded human-brain, antibody was diluted at 1:100

Note

For research use only.