
Summary

Production Name	CD180 Rabbit Polyclonal Antibody
Description	Rabbit Polyclonal Antibody
Host	Rabbit
Application	WB,ELISA
Reactivity	Human,Mouse,Rat

Performance

Conjugation	Unconjugated
Modification	Unmodified
Isotype	IgG
Clonality	Polyclonal
Form	Liquid
Storage	Store at 4°C short term. Aliquot and store at -20°C long term. Avoid freeze/thaw cycles.
Buffer	Liquid in PBS containing 50% glycerol, 0.5% BSA and 0.02% New type preservative N.
Purification	Affinity purification

Immunogen

Gene Name	CD180
Alternative Names	CD180; LY64; RP105; CD180 antigen; Lymphocyte antigen 64; Radioprotective 105 kDa protein; CD180
Gene ID	4064.0
SwissProt ID	Q99467.Synthesized peptide derived from CD180 antigen at AA range: 221-270

Application

Dilution Ratio	WB 1:500 - 1:2000. ELISA: 1:10000
Molecular Weight	75kD

Background

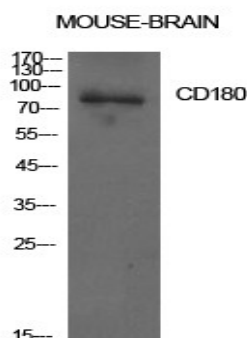
Product Name: CD180 Rabbit Polyclonal Antibody
Catalog #: APRab08253



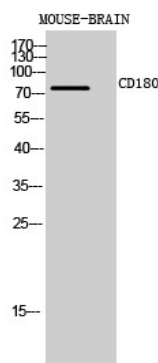
CD180 is a cell surface molecule consisting of extracellular leucine-rich repeats (LRR) and a short cytoplasmic tail. The extracellular LRR is associated with a molecule called MD-1 and form the cell surface receptor complex, RP105/MD-1. It belongs to the family of pathogen receptors, Toll-like receptors (TLR). RP105/MD1, by working in concert with TLR4, controls B cell recognition and signaling of lipopolysaccharide (LPS), a membrane constituent of Gram-negative bacteria. [provided by RefSeq, Jul 2008],disease:Decreased expression of LY64 has been shown in systemic lupus erythematosus (SLE). The loss of LY64 is associated with B-cell activation and increased disease activity in SLE patients.,function:May cooperate with MD-1 and TLR4 to mediate the innate immune response to bacterial lipopolysaccharide (LPS) in B-cells. Leads to NF-kappa-B activation. Also involved in the life/death decision of B-cells.,similarity:Belongs to the Toll-like receptor family.,similarity:Contains 17 LRR (leucine-rich) repeats.,subunit:Binds to MD-1.,tissue specificity:Expressed mainly on mature peripheral B cells. Detected in spleen, lymph node and appendix. Not detected in pre-B and -T cells.,

Research Area

Image Data



Western Blot analysis of mouse brain cells using CD180 Polyclonal Antibody. Antibody was diluted at 1:1000. Secondary antibody was diluted at 1:20000



Western Blot analysis of MOUSE-BRAIN cells using CD180 Polyclonal Antibody diluted at 1: 1000. Secondary antibody was diluted at 1:20000

Product Name: CD180 Rabbit Polyclonal Antibody
Catalog #: APRab08253



Note

For research use only.