

**Product Name: CD169 Rabbit Polyclonal Antibody**  
**Catalog #: APRab08248**



---

## Summary

<b>Production Name</b>	CD169 Rabbit Polyclonal Antibody
<b>Description</b>	Rabbit Polyclonal Antibody
<b>Host</b>	Rabbit
<b>Application</b>	WB,ELISA
<b>Reactivity</b>	Human,Rat,Mouse

## Performance

<b>Conjugation</b>	Unconjugated
<b>Modification</b>	Unmodified
<b>Isotype</b>	IgG
<b>Clonality</b>	Polyclonal
<b>Form</b>	Liquid
<b>Storage</b>	Store at 4°C short term. Aliquot and store at -20°C long term. Avoid freeze/thaw cycles.
<b>Buffer</b>	Liquid in PBS containing 50% glycerol, 0.5% BSA and 0.02% New type preservative N.
<b>Purification</b>	Affinity purification

## Immunogen

<b>Gene Name</b>	SIGLEC1
<b>Alternative Names</b>	SIGLEC1; SN; Sialoadhesin; Sialic acid-binding Ig-like lectin 1; Siglec-1; CD169
<b>Gene ID</b>	6614.0
<b>SwissProt ID</b>	Q9BZZ2.The antiserum was produced against synthesized peptide derived from the Internal region of human SIGLEC1. AA range:1321-1370

## Application

<b>Dilution Ratio</b>	WB 1:500 - 1:2000. ELISA: 1:20000
<b>Molecular Weight</b>	190kD

## Background

---

**Product Name: CD169 Rabbit Polyclonal Antibody**  
**Catalog #: APRab08248**

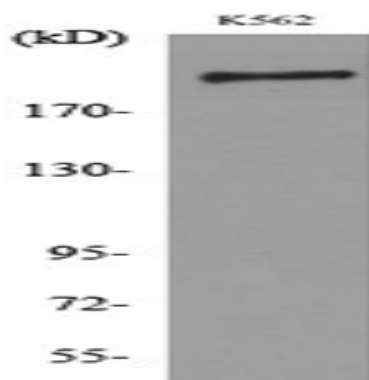


This gene encodes a member of the immunoglobulin superfamily. The encoded protein is a lectin-like adhesion molecule that binds glycoconjugate ligands on cell surfaces in a sialic acid-dependent manner. It is a type I transmembrane protein expressed only by a subpopulation of macrophages and is involved in mediating cell-cell interactions. Alternative splicing produces a transcript variant encoding an isoform that is soluble rather than membrane-bound; however, the full-length nature of this variant has not been determined. [provided by RefSeq, Jul 2008], alternative products: Additional isoforms seem to exist, function: Macrophage-restricted adhesion molecule that mediates sialic-acid dependent binding to lymphocytes, including granulocytes, monocytes, natural killer cells, B-cells and CD8 T-cells. Preferentially binds to alpha-2,3-linked sialic acid (By similarity). Binds to SPN/CD43 on T-cells (By similarity). May play a role in hemopoiesis., online information: Siglec-1, similarity: Belongs to the immunoglobulin superfamily. SIGLEC (sialic acid binding Ig-like lectin) family., similarity: Contains 1 Ig-like V-type (immunoglobulin-like) domain., similarity: Contains 16 Ig-like C2-type (immunoglobulin-like) domains., tissue specificity: Expressed by macrophages in various tissues. High levels are found in spleen, lymph node, perivascular macrophages in brain and lower levels in bone marrow, liver Kupffer cells and lamina propria of colon and lung. Also expressed by inflammatory macrophages in rheumatoid arthritis.,

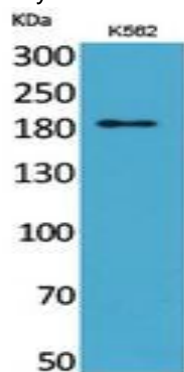
## Research Area

Cell adhesion molecules (CAMs);

## Image Data



Western blot analysis of lysate from K562 cells, using SIGLEC1 Antibody.



**Product Name: CD169 Rabbit Polyclonal Antibody**  
**Catalog #: APRab08248**



---

Western Blot analysis of K562 cells using CD169 Polyclonal Antibody.. Secondary antibody was diluted at 1:20000

**Note**

For research use only.