

## Summary

<b>Production Name</b>	CD107b Rabbit Polyclonal Antibody
<b>Description</b>	Rabbit Polyclonal Antibody
<b>Host</b>	Rabbit
<b>Application</b>	WB,IHC,ELISA
<b>Reactivity</b>	Human,Rat,Mouse

## Performance

<b>Conjugation</b>	Unconjugated
<b>Modification</b>	Unmodified
<b>Isotype</b>	IgG
<b>Clonality</b>	Polyclonal
<b>Form</b>	Liquid
<b>Storage</b>	Store at 4°C short term. Aliquot and store at -20°C long term. Avoid freeze/thaw cycles.
<b>Buffer</b>	Liquid in PBS containing 50% glycerol, 0.5% BSA and 0.02% New type preservative N.
<b>Purification</b>	Affinity purification

## Immunogen

<b>Gene Name</b>	LAMP2
<b>Alternative Names</b>	LAMP2; Lysosome-associated membrane glycoprotein 2; LAMP-2; Lysosome-associated membrane protein 2; CD107 antigen-like family member B; CD107b
<b>Gene ID</b>	3920.0
<b>SwissProt ID</b>	P13473.The antiserum was produced against synthesized peptide derived from the Internal region of human LAMP2. AA range:121-170

## Application

<b>Dilution Ratio</b>	WB 1:500 - 1:2000. IHC-p: 1:100-1:300. ELISA: 1:10000..
<b>Molecular Weight</b>	100kD

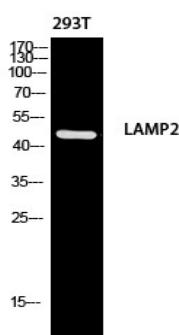
## Background

The protein encoded by this gene is a member of a family of membrane glycoproteins. This glycoprotein provides selectins with carbohydrate ligands. It may play a role in tumor cell metastasis. It may also function in the protection, maintenance, and adhesion of the lysosome. Alternative splicing of this gene results in multiple transcript variants encoding distinct proteins. [provided by RefSeq, Jul 2008],disease:Defects in LAMP2 are the cause of Danon disease (DAND) [MIM:300257]; also known as glycogen storage disease type 2B (GSD2B). DAND is a lysosomal glycogen storage disease characterized by the clinical triad of cardiomyopathy, vacuolar myopathy and mental retardation. It is often associated with an accumulation of glycogen in muscle and lysosomes.,function:Implicated in tumor cell metastasis. May function in protection of the lysosomal membrane from autodigestion, maintenance of the acidic environment of the lysosome, adhesion when expressed on the cell surface (plasma membrane), and inter-and intracellular signal transduction.,PTM:O- and N-glycosylated; some of the 16 N-linked glycans are polylectosaminoglycans.,similarity:Belongs to the LAMP family.,subcellular location:This protein shuttles between lysosomes, endosomes, and the plasma membrane.,tissue specificity:Isoform LAMP-2A is highly expressed in placenta, lung and liver, less in kidney and pancreas, low in brain and skeletal muscle. Isoform LAMP-2B is highly expressed in skeletal muscle, less in brain, placenta, lung, kidney and pancreas, very low in liver.,

## Research Area

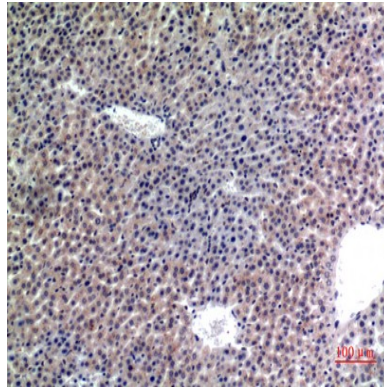
Lysosome;

## Image Data



Western blot analysis of 293T using LAMP2 antibody. Antibody was diluted at 1:1000. Secondary antibody was diluted at 1:20000

**Product Name: CD107b Rabbit Polyclonal Antibody**  
**Catalog #: APRab08187**



Immunohistochemical analysis of paraffin-embedded mouse-liver, antibody was diluted at 1:100

**Note**

For research use only.