

**Product Name: CD100 Rabbit Polyclonal Antibody**  
**Catalog #: APRab08181**



## Summary

<b>Production Name</b>	CD100 Rabbit Polyclonal Antibody
<b>Description</b>	Rabbit Polyclonal Antibody
<b>Host</b>	Rabbit
<b>Application</b>	WB,ELISA
<b>Reactivity</b>	Human,Mouse,Rat

## Performance

<b>Conjugation</b>	Unconjugated
<b>Modification</b>	Unmodified
<b>Isotype</b>	IgG
<b>Clonality</b>	Polyclonal
<b>Form</b>	Liquid
<b>Storage</b>	Store at 4°C short term. Aliquot and store at -20°C long term. Avoid freeze/thaw cycles.
<b>Buffer</b>	Liquid in PBS containing 50% glycerol, 0.5% BSA and 0.02% New type preservative N.
<b>Purification</b>	Affinity purification

## Immunogen

<b>Gene Name</b>	SEMA4D
<b>Alternative Names</b>	SEMA4D; C9orf164; CD100; SEMAJ; Semaphorin-4D; A8; BB18; GR3; CD100
<b>Gene ID</b>	10507.0
<b>SwissProt ID</b>	Q92854.The antiserum was produced against synthesized peptide derived from the N-terminal region of human SEMA4D. AA range:61-110

## Application

<b>Dilution Ratio</b>	WB 1:500 - 1:2000. ELISA: 1:20000
<b>Molecular Weight</b>	95kD

## Background

**Product Name: CD100 Rabbit Polyclonal Antibody**  
**Catalog #: APRab08181**

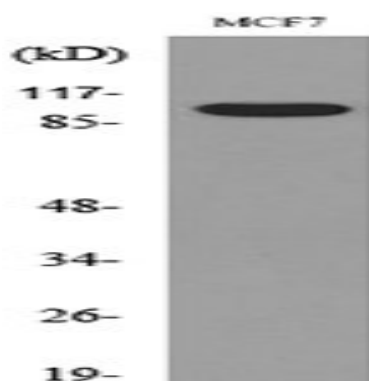


function:May play a functional role in the immune system, as well as in the nervous system. Induces B-cells to aggregate and improves their viability in vitro.,similarity:Belongs to the semaphorin family.,similarity:Contains 1 Ig-like C2-type (immunoglobulin-like) domain.,similarity:Contains 1 PSI domain.,similarity:Contains 1 Sema domain.,subunit:Homodimer. Binds PLXNB1.,tissue specificity:Strongly expressed in skeletal muscle, peripheral blood lymphocytes, spleen, and thymus and also expressed at lower levels in testes, brain, kidney, small intestine, prostate, heart, placenta, lung and pancreas, but not in colon and liver.,function:May play a functional role in the immune system, as well as in the nervous system. Induces B-cells to aggregate and improves their viability in vitro.,similarity:Belongs to the semaphorin family.,similarity:Contains 1 Ig-like C2-type (immunoglobulin-like) domain.,similarity:Contains 1 PSI domain.,similarity:Contains 1 Sema domain.,subunit:Homodimer. Binds PLXNB1.,tissue specificity:Strongly expressed in skeletal muscle, peripheral blood lymphocytes, spleen, and thymus and also expressed at lower levels in testes, brain, kidney, small intestine, prostate, heart, placenta, lung and pancreas, but not in colon and liver.,

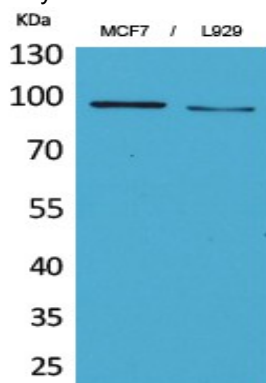
## Research Area

Axon guidance;

## Image Data



Western blot analysis of lysate from MCF7 cells, using SEMA4D Antibody.



Western Blot analysis of MCF7, L929 cells using CD100 Polyclonal Antibody.. Secondary antibody was diluted at 1:20000

**Product Name: CD100 Rabbit Polyclonal Antibody**  
**Catalog #: APRab08181**

---



**Note**

For research use only.