

## Summary

<b>Production Name</b>	CD10 Rabbit Polyclonal Antibody
<b>Description</b>	Rabbit Polyclonal Antibody
<b>Host</b>	Rabbit
<b>Application</b>	WB,IHC,
<b>Reactivity</b>	Human,Mouse,Rat

## Performance

<b>Conjugation</b>	Unconjugated
<b>Modification</b>	Unmodified
<b>Isotype</b>	IgG
<b>Clonality</b>	Polyclonal
<b>Form</b>	Liquid
<b>Storage</b>	Store at 4°C short term. Aliquot and store at -20°C long term. Avoid freeze/thaw cycles.
<b>Buffer</b>	Liquid in PBS containing 50% glycerol, 0.5% BSA and 0.02% New type preservative N.
<b>Purification</b>	Affinity purification

## Immunogen

<b>Gene Name</b>	MME MME; EPN; Neprilysin; Atriopeptidase; Common acute lymphocytic leukemia antigen;
<b>Alternative Names</b>	CALLA; Enkephalinase; Neutral endopeptidase 24.11; NEP; Neutral endopeptidase; Skin fibroblast elastase; SFE; CD10
<b>Gene ID</b>	4311.0
<b>SwissProt ID</b>	P08473.The antiserum was produced against synthesized peptide derived from the Internal region of human MME. AA range:491-540

## Application

<b>Dilution Ratio</b>	WB 1:500 - 1:2000 IHC 1:100 - 1:300. ELISA: 1:20000..
<b>Molecular Weight</b>	85kD

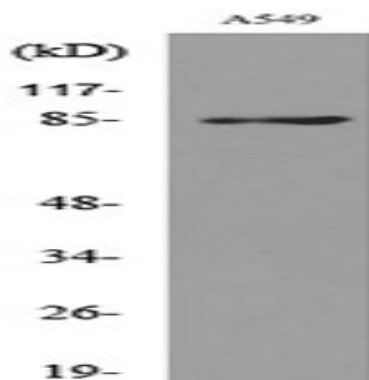
## Background

This gene encodes a common acute lymphocytic leukemia antigen that is an important cell surface marker in the diagnosis of human acute lymphocytic leukemia (ALL). This protein is present on leukemic cells of pre-B phenotype, which represent 85% of cases of ALL. This protein is not restricted to leukemic cells, however, and is found on a variety of normal tissues. It is a glycoprotein that is particularly abundant in kidney, where it is present on the brush border of proximal tubules and on glomerular epithelium. The protein is a neutral endopeptidase that cleaves peptides at the amino side of hydrophobic residues and inactivates several peptide hormones including glucagon, enkephalins, substance P, neurotensin, oxytocin, and bradykinin. This gene, which encodes a 100-kD type II transmembrane glycoprotein, exists in a single copy of greater than 45 kb. The 5' untranslated region of this catalytic activity: Preferential cleavage of polypeptides between hydrophobic residues, particularly with Phe or Tyr at P1', cofactor: Binds 1 zinc ion per subunit., disease: Important cell surface marker in the diagnostic of human acute lymphocytic leukemia., enzyme regulation: Inhibited in a dose dependent manner by opiorphin., function: Thermolysin-like specificity, but is almost confined on acting on polypeptides of up to 30 amino acids. Biologically important in the destruction of opioid peptides such as Met- and Leu-enkephalins by cleavage of a Gly-Phe bond. Involved in the degradation of atrial natriuretic factor (ANF), similarity: Belongs to the peptidase M13 family.,

## Research Area

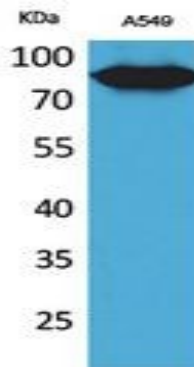
Renin-angiotensin system; Hematopoietic cell lineage; Alzheimer's disease;

## Image Data

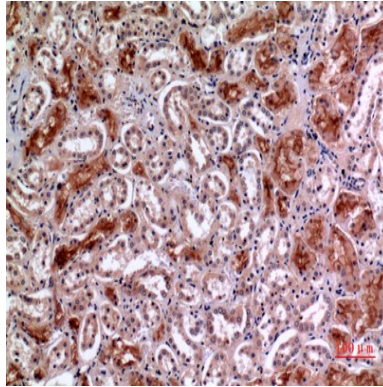


Western blot analysis of lysate from A549 cells, using MME Antibody.

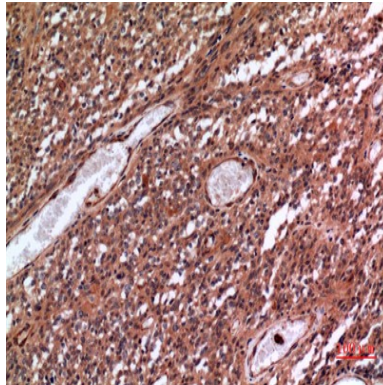
**Product Name: CD10 Rabbit Polyclonal Antibody**  
**Catalog #: APRab08179**



Western Blot analysis of A549 cells using CD10 Polyclonal Antibody.. Secondary antibody was diluted at 1:20000



Immunohistochemical analysis of paraffin-embedded human-kidney, antibody was diluted at 1:100



Immunohistochemical analysis of paraffin-embedded human-brain, antibody was diluted at 1:100

## **Note**

For research use only.