

Product Name: CCS Rabbit Polyclonal Antibody
Catalog #: APRab08169



Summary

Production Name	CCS Rabbit Polyclonal Antibody
Description	Rabbit Polyclonal Antibody
Host	Rabbit
Application	WB
Reactivity	Human,Rat,Mouse

Performance

Conjugation	Unconjugated
Modification	Unmodified
Isotype	IgG
Clonality	Polyclonal
Form	Liquid
Storage	Store at 4°C short term. Aliquot and store at -20°C long term. Avoid freeze/thaw cycles.
Buffer	Liquid in PBS containing 50% glycerol, 0.5% BSA and 0.02% New type preservative N.
Purification	Affinity purification

Immunogen

Gene Name	CCS
Alternative Names	CCS; Copper chaperone for superoxide dismutase; Superoxide dismutase copper chaperone
Gene ID	9973.0
SwissProt ID	O14618.The antiserum was produced against synthesized peptide derived from human CCS. AA range:225-274

Application

Dilution Ratio	WB 1:500-1:2000. ELISA: 1:10000.
Molecular Weight	32kD

Background

Product Name: CCS Rabbit Polyclonal Antibody
Catalog #: APRab08169

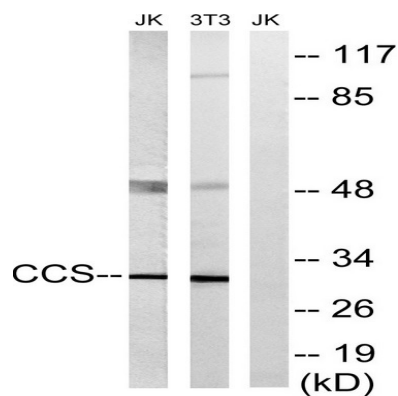


Copper chaperone for superoxide dismutase specifically delivers Cu to copper/zinc superoxide dismutase and may activate copper/zinc superoxide dismutase through direct insertion of the Cu cofactor. [provided by RefSeq, Jul 2008],cofactor: Binds 1 zinc ion per subunit.,cofactor: Binds 2 copper ions per subunit.,function: Delivers copper to copper zinc superoxide dismutase (SOD1).,similarity: Contains 1 HMA domain.,similarity: In the C-terminal section; belongs to the Cu-Zn superoxide dismutase family.,subunit: Homodimer, and heterodimer with SOD1.,tissue specificity: Ubiquitous.,

Research Area

Amyotrophic lateral sclerosis (ALS);

Image Data



Western blot analysis of lysates from NIH/3T3 and Jurkat cells, using CCS Antibody. The lane on the right is blocked with the synthesized peptide.

Note

For research use only.