

Product Name: CCP3 Rabbit Polyclonal Antibody
Catalog #: APRab08156



Summary

Production Name	CCP3 Rabbit Polyclonal Antibody
Description	Rabbit Polyclonal Antibody
Host	Rabbit
Application	IHC,ELISA
Reactivity	Human,Rat,Mouse

Performance

Conjugation	Unconjugated
Modification	Unmodified
Isotype	IgG
Clonality	Polyclonal
Form	Liquid
Storage	Store at 4°C short term. Aliquot and store at -20°C long term. Avoid freeze/thaw cycles.
Buffer	Liquid in PBS containing 50% glycerol, 0.5% BSA and 0.02% New type preservative N.
Purification	Affinity purification

Immunogen

Gene Name	AGBL3
Alternative Names	AGBL3; CCP3; Cytosolic carboxypeptidase 3; ATP/GTP-binding protein-like 3
Gene ID	340351.0
SwissProt ID	Q8NEM8.The antiserum was produced against synthesized peptide derived from human AGBL3. AA range:611-660

Application

Dilution Ratio	IHC 1:100-1:300 ELISA: 1:20000
Molecular Weight	

Background

cofactor: Binds 1 zinc ion per subunit.,function: May play a role in the processing of tubulin.,similarity: Belongs to the

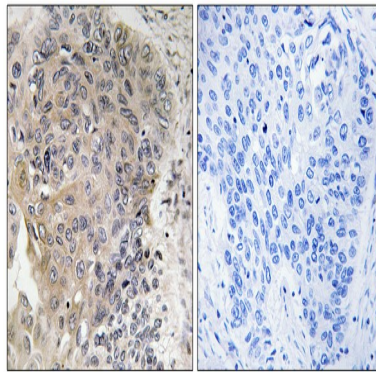
Product Name: CCP3 Rabbit Polyclonal Antibody
Catalog #: APRab08156



peptidase M14 family.,cofactor: Binds 1 zinc ion per subunit.,function: May play a role in the processing of tubulin.,similarity: Belongs to the peptidase M14 family.,

Research Area

Image Data



Immunohistochemistry analysis of paraffin-embedded human lung carcinoma, using CBCP3 Antibody. The picture on the right is blocked with the synthesized peptide.

Note

For research use only.