
Summary

Production Name	CCDC45 Rabbit Polyclonal Antibody
Description	Rabbit Polyclonal Antibody
Host	Rabbit
Application	WB,ELISA
Reactivity	Human,Mouse,Rat

Performance

Conjugation	Unconjugated
Modification	Unmodified
Isotype	IgG
Clonality	Polyclonal
Form	Liquid
Storage	Store at 4°C short term. Aliquot and store at -20°C long term. Avoid freeze/thaw cycles.
Buffer	Liquid in PBS containing 50% glycerol, 0.5% BSA and 0.02% New type preservative N.
Purification	Affinity purification

Immunogen

Gene Name	CEP95
Alternative Names	CEP95; CCDC45; CEP45; Centrosomal protein of 95 kDa; Coiled-coil domain-containing protein 45
Gene ID	90799.0
SwissProt ID	Q96GE4.The antiserum was produced against synthesized peptide derived from human CCDC45. AA range:591-640

Application

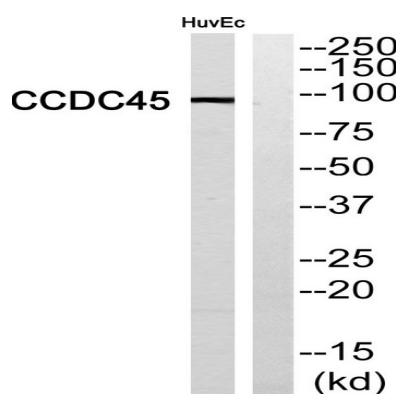
Dilution Ratio	WB 1:500 - 1:2000. ELISA: 1:40000. Not yet tested in other applications.
Molecular Weight	95kD

Background

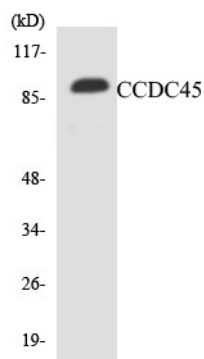
PTM:Phosphorylated upon DNA damage, probably by ATM or ATR.,PTM:Phosphorylated upon DNA damage, probably by ATM or ATR.,

Research Area

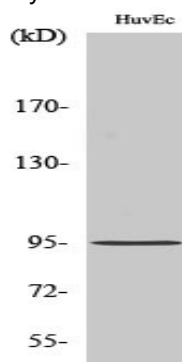
Image Data



Western blot analysis of CCDC45 Antibody. The lane on the right is blocked with the CCDC45 peptide.



Western blot analysis of the lysates from Jurkat cells using CCDC45 antibody.



Western Blot analysis of various cells using CCDC45 Polyclonal Antibody

Product Name: CCDC45 Rabbit Polyclonal Antibody
Catalog #: APRab08120



Note

For research use only.