

Summary

Production Name	Cathepsin L Rabbit Polyclonal Antibody
Description	Rabbit Polyclonal Antibody
Host	Rabbit
Application	WB,IHC,ELISA
Reactivity	Human,Rat,Mouse

Performance

Conjugation	Unconjugated
Modification	Unmodified
Isotype	IgG
Clonality	Polyclonal
Form	Liquid
Storage	Store at 4°C short term. Aliquot and store at -20°C long term. Avoid freeze/thaw cycles.
Buffer	Liquid in PBS containing 50% glycerol, 0.5% BSA and 0.02% New type preservative N.
Purification	Affinity purification

Immunogen

Gene Name	CTSL1
Alternative Names	CTSL1; CTSL; Cathepsin L1; Major excreted protein; MEP
Gene ID	1514.0
SwissProt ID	P07711.Synthesized peptide derived from the Internal region of human Cathepsin L.

Application

Dilution Ratio	WB 1:500 - 1:2000. IHC: 1:100-300 ELISA: 1:20000..
Molecular Weight	37kD

Background

The protein encoded by this gene is a lysosomal cysteine proteinase that plays a major role in intracellular protein

Product Name: Cathepsin L Rabbit Polyclonal Antibody
Catalog #: APRab08014

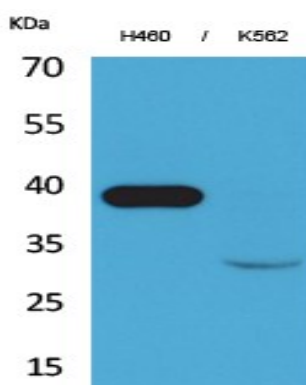


catabolism. Its substrates include collagen and elastin, as well as alpha-1 protease inhibitor, a major controlling element of neutrophil elastase activity. The encoded protein has been implicated in several pathologic processes, including myofibril necrosis in myopathies and in myocardial ischemia, and in the renal tubular response to proteinuria. This protein, which is a member of the peptidase C1 family, is a dimer composed of disulfide-linked heavy and light chains, both produced from a single protein precursor. Multiple alternatively spliced transcript variants have been found for this gene. [provided by RefSeq, Apr 2012],catalytic activity:Specificity close to that of papain. As compared to cathepsin B, cathepsin L exhibits higher activity toward protein substrates, but has little activity on Z-Arg-Arg-NHMec, and no peptidyl-dipeptidase activity.,function:Important for the overall degradation of proteins in lysosomes.,similarity:Belongs to the peptidase C1 family.,subunit:Dimer of a heavy and a light chain linked by disulfide bonds,

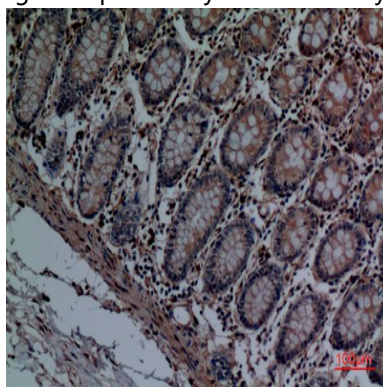
Research Area

Lysosome;Antigen processing and presentation;

Image Data

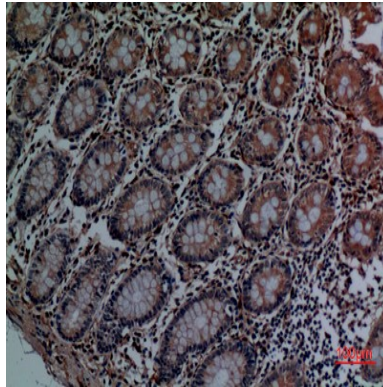


Western Blot analysis of H460, K562 cells using Cathepsin L Polyclonal Antibody.. Secondary antibody was diluted at 1:20000

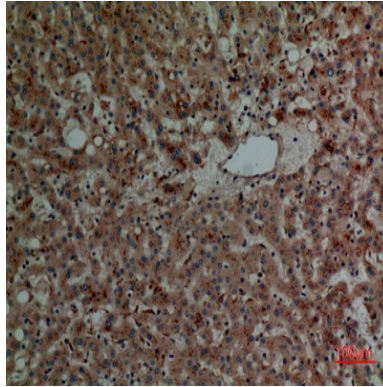


Immunohistochemical analysis of paraffin-embedded human-colon, antibody was diluted at 1:100

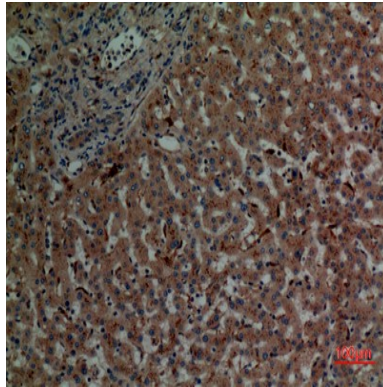
Product Name: Cathepsin L Rabbit Polyclonal Antibody
Catalog #: APRab08014



Immunohistochemical analysis of paraffin-embedded human-colon, antibody was diluted at 1:100



Immunohistochemical analysis of paraffin-embedded human-liver, antibody was diluted at 1:100



Immunohistochemical analysis of paraffin-embedded human-liver, antibody was diluted at 1:100

Note

For research use only.