

Summary

Production Name	Cathepsin H Rabbit Polyclonal Antibody
Description	Rabbit Polyclonal Antibody
Host	Rabbit
Application	WB
Reactivity	Human,Rat,Mouse

Performance

Conjugation	Unconjugated
Modification	Unmodified
Isotype	IgG
Clonality	Polyclonal
Form	Liquid
Storage	Store at 4°C short term. Aliquot and store at -20°C long term. Avoid freeze/thaw cycles.
Buffer	Liquid in PBS containing 50% glycerol, 0.5% BSA and 0.02% New type preservative N.
Purification	Affinity purification

Immunogen

Gene Name	CTSH
Alternative Names	CTSH; CPSB; Pro-cathepsin H
Gene ID	1512.0
SwissProt ID	P09668.Synthesized peptide derived from Cathepsin H . at AA range: 70-150

Application

Dilution Ratio	WB 1:500-1:2000. ELISA: 1:20000.
Molecular Weight	40kD

Background

The protein encoded by this gene is a lysosomal cysteine proteinase important in the overall degradation of lysosomal proteins. It is composed of a dimer of disulfide-linked heavy and light chains, both produced from a single protein

Product Name: Cathepsin H Rabbit Polyclonal Antibody
Catalog #: APRab08013

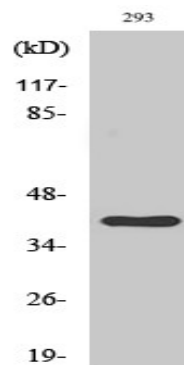


precursor. The encoded protein, which belongs to the peptidase C1 protein family, can act both as an aminopeptidase and as an endopeptidase. Increased expression of this gene has been correlated with malignant progression of prostate tumors. Alternate splicing of this gene results in multiple transcript variants encoding different isoforms. [provided by RefSeq, Jan 2016],catalytic activity:Hydrolysis of proteins, acting as an aminopeptidase (notably, cleaving Arg-|-Xaa bonds) as well as an endopeptidase.,function:Important for the overall degradation of proteins in lysosomes.,similarity:Belongs to the peptidase C1 family.,subunit:Composed of a mini chain and a large chain. The large chain may be split into heavy and light chain. All chains are held together by disulfide bonds.,

Research Area

Lysosome;

Image Data



Western Blot analysis of various cells using Cathepsin H Polyclonal Antibody

Note

For research use only.