

---

## Summary

<b>Production Name</b>	Catenin- $\gamma$ Rabbit Polyclonal Antibody
<b>Description</b>	Rabbit Polyclonal Antibody
<b>Host</b>	Rabbit
<b>Application</b>	IHC, WB,
<b>Reactivity</b>	Human, Mouse, Rat

## Performance

<b>Conjugation</b>	Unconjugated
<b>Modification</b>	Unmodified
<b>Isotype</b>	IgG
<b>Clonality</b>	Polyclonal
<b>Form</b>	Liquid
<b>Storage</b>	Store at 4°C short term. Aliquot and store at -20°C long term. Avoid freeze/thaw cycles.
<b>Buffer</b>	Liquid in PBS containing 50% glycerol, 0.5% BSA and 0.02% New type preservative N.
<b>Purification</b>	Affinity purification

## Immunogen

<b>Gene Name</b>	JUP
<b>Alternative Names</b>	JUP; CTNNG; DP3; Junction plakoglobin; Catenin gamma; Desmoplakin III; Desmoplakin-3
<b>Gene ID</b>	3728.0
<b>SwissProt ID</b>	P14923. The antiserum was produced against synthesized peptide derived from human Catenin-gamma. AA range: 696-745

## Application

<b>Dilution Ratio</b>	WB 1:500 - 1:2000. IHC 1:100 - 1:300. ELISA: 1:20000. Not yet tested in other applications.
<b>Molecular Weight</b>	82kD

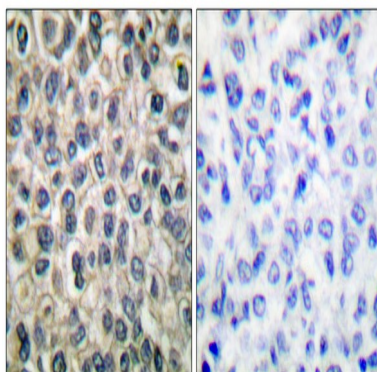
## Background

This gene encodes a major cytoplasmic protein which is the only known constituent common to submembranous plaques of both desmosomes and intermediate junctions. This protein forms distinct complexes with cadherins and desmosomal cadherins and is a member of the catenin family since it contains a distinct repeating amino acid motif called the armadillo repeat. Mutation in this gene has been associated with Naxos disease. Alternative splicing occurs in this gene; however, not all transcripts have been fully described. [provided by RefSeq, Jul 2008],disease:Defects in JUP are the cause of familial arrhythmogenic right ventricular dysplasia type 12 (ARVD12) [MIM:611528]; also called arrhythmogenic right ventricular cardiomyopathy type 12 (ARVC12). ARVD is an autosomal dominant disease characterized by partial degeneration of the myocardium of the right ventricle, electrical instability, and sudden death. It is clinically defined by electrocardiographic and angiographic criteria; pathologic findings, replacement of ventricular myocardium with fatty and fibrous elements, preferentially involve the right ventricular free wall.,disease:Defects in JUP are the cause of Naxos disease (NXD) [MIM:601214]. NXD is an autosomal recessive disorder combining diffuse non-epidermolytic palmoplantar keratoderma with arrhythmogenic right ventricular dysplasia/cardiomyopathy and woolly hair.,function:Common junctional plaque protein. The membrane-associated plaques are architectural elements in an important strategic position to influence the arrangement and function of both the cytoskeleton and the cells within the tissue. The presence of plakoglobin in both the desmosomes and in the intermediate junctions suggests that it plays a central role in the structure and function of submembranous plaques.,sequence caution:Translation N-terminally shortened.,similarity:Belongs to the beta-catenin family.,similarity:Contains 9 ARM repeats.,subcellular location:Cytoplasmic in a soluble and membrane-associated form.,subunit:Homodimer. Interacts with MUC1.,

## Research Area

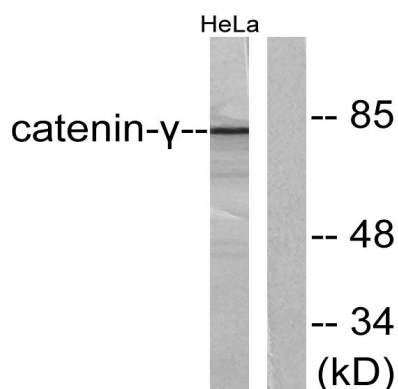
Pathways in cancer;Acute myeloid leukemia;Arrhythmogenic right ventricular cardiomyopathy (ARVC);

## Image Data

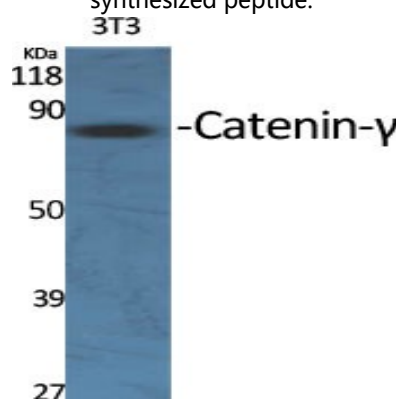


Immunohistochemistry analysis of paraffin-embedded human breast carcinoma tissue, using Catenin-gamma Antibody. The picture on the right is blocked with the synthesized peptide.

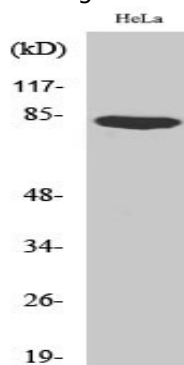
Product Name: Catenin- $\gamma$  Rabbit Polyclonal Antibody  
Catalog #: APRab08006



Western blot analysis of lysates from HeLa cells, using Catenin- $\gamma$  Antibody. The lane on the right is blocked with the synthesized peptide.



Western Blot analysis of various cells using Catenin- $\gamma$  Polyclonal Antibody diluted at 1: 2000



Western Blot analysis of HeLa cells using Catenin- $\gamma$  Polyclonal Antibody diluted at 1: 2000

### Note

For research use only.