

Product Name: Casein Kinase Iy2 Rabbit Polyclonal Antibody
Catalog #: APRab07945



Summary

Production Name	Casein Kinase Iy2 Rabbit Polyclonal Antibody
Description	Rabbit Polyclonal Antibody
Host	Rabbit
Application	WB,ELISA
Reactivity	Human,Mouse,Rat

Performance

Conjugation	Unconjugated
Modification	Unmodified
Isotype	IgG
Clonality	Polyclonal
Form	Liquid
Storage	Store at 4°C short term. Aliquot and store at -20°C long term. Avoid freeze/thaw cycles.
Buffer	Liquid in PBS containing 50% glycerol, 0.5% BSA and 0.02% New type preservative N.
Purification	Affinity purification

Immunogen

Gene Name	CSNK1G2
Alternative Names	CSNK1G2; CK1G2; Casein kinase I isoform gamma-2; CKI-gamma 2
Gene ID	1455.0
SwissProt ID	P78368.The antiserum was produced against synthesized peptide derived from human CKI-gamma2. AA range:10-59

Application

Dilution Ratio	WB 1:500 - 1:2000. ELISA: 1:10000
Molecular Weight	47kD

Product Name: Casein Kinase I γ 2 Rabbit Polyclonal Antibody
Catalog #: APRab07945



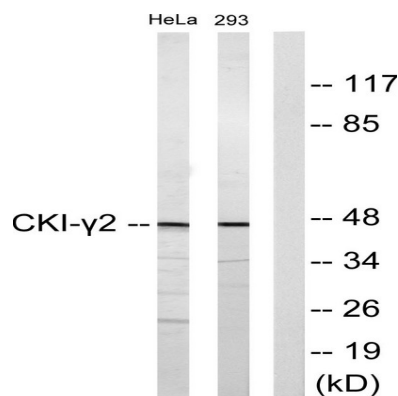
Background

catalytic activity:ATP + a protein = ADP + a phosphoprotein.,function:Casein kinases are operationally defined by their preferential utilization of acidic proteins such as caseins as substrates. It can phosphorylate a large number of proteins. Participates in Wnt signaling.,PTM:Autophosphorylated.,similarity:Belongs to the protein kinase superfamily. CK1 Ser/Thr protein kinase family. Casein kinase I subfamily.,similarity:Contains 1 protein kinase domain.,subunit:Monomer.,tissue specificity:Testis.,catalytic activity:ATP + a protein = ADP + a phosphoprotein.,function:Casein kinases are operationally defined by their preferential utilization of acidic proteins such as caseins as substrates. It can phosphorylate a large number of proteins. Participates in Wnt signaling.,PTM:Autophosphorylated.,similarity:Belongs to the protein kinase superfamily. CK1 Ser/Thr protein kinase family. Casein kinase I subfamily.,similarity:Contains 1 protein kinase domain.,subunit:Monomer.,tissue specificity:Testis.,

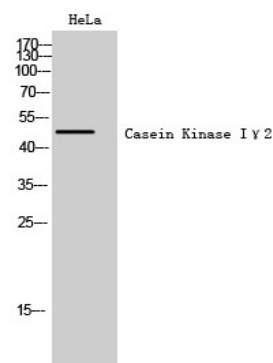
Research Area

Hedgehog;

Image Data



Western blot analysis of lysates from HeLa and 293 cells, using CKI-gamma2 Antibody. The lane on the right is blocked with the synthesized peptide.



Western Blot analysis of HeLa cells using Casein Kinase I γ 2 Polyclonal Antibody

**Product Name: Casein Kinase Iy2 Rabbit Polyclonal
Antibody**
Catalog #: APRab07945



Note

For research use only.