

Product Name: Casein Kinase I γ 1/2/3 Rabbit Polyclonal Antibody
Catalog #: APRab07944



Summary

Production Name	Casein Kinase I γ 1/2/3 Rabbit Polyclonal Antibody
Description	Rabbit Polyclonal Antibody
Host	Rabbit
Application	IHC,ELISA
Reactivity	Human,Mouse,Rat

Performance

Conjugation	Unconjugated
Modification	Unmodified
Isotype	IgG
Clonality	Polyclonal
Form	Liquid
Storage	Store at 4°C short term. Aliquot and store at -20°C long term. Avoid freeze/thaw cycles.
Buffer	Liquid in PBS containing 50% glycerol, 0.5% BSA and 0.02% New type preservative N.
Purification	Affinity purification

Immunogen

Gene Name	CSNK1G1/CSNK1G2/CSNK1G3 CSNK1G1; Casein kinase I isoform gamma-1; CKI-gamma 1; CSNK1G2; CK1G2; Casein
Alternative Names	kinase I isoform gamma-2; CKI-gamma 2; CSNK1G3; Casein kinase I isoform gamma-3; CKI-gamma 3
Gene ID	53944/1455/1456
SwissProt ID	Q9HCP0/P78368/Q9Y6M4.The antiserum was produced against synthesized peptide derived from human CK-1gamma1/2/3. AA range:229-278

Application

Dilution Ratio	IHC 1:100-1:300 ELISA: 1:40000
Molecular Weight	

Product Name: Casein Kinase I γ 1/2/3 Rabbit Polyclonal Antibody
Catalog #: APRab07944



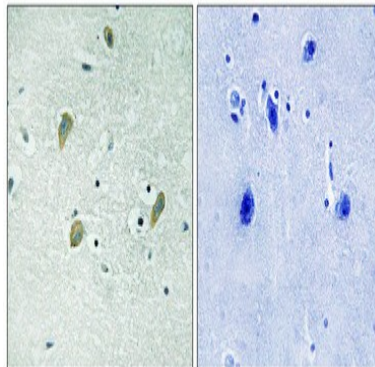
Background

This gene encodes a member of the casein kinase I gene family. This family is comprised of serine/threonine kinases that phosphorylate acidic proteins such as caseins. The encoded kinase plays a role in cell cycle checkpoint arrest in response to stalled replication forks by phosphorylating Claspin. A mutation in this gene may be associated with non-syndromic early-onset epilepsy (NSEOE). [provided by RefSeq, Jul 2016], catalytic activity: ATP + a protein = ADP + a phosphoprotein., function: Casein kinases are operationally defined by their preferential utilization of acidic proteins such as caseins as substrates. It can phosphorylate a large number of proteins. Participates in Wnt signaling., PTM: Autophosphorylated., similarity: Belongs to the protein kinase superfamily., similarity: Belongs to the protein kinase superfamily. CK1 Ser/Thr protein kinase family. Casein kinase I subfamily., similarity: Contains 1 protein kinase domain., subunit: Monomer.,

Research Area

Hedgehog;

Image Data



Immunohistochemical analysis of paraffin-embedded Human brain. Antibody was diluted at 1:100 (4 $^{\circ}$, overnight) . High-pressure and temperature Tris-EDTA, pH 8.0 was used for antigen retrieval. Negative control (right) obtained from antibody was pre-absorbed by immunogen peptide.

Note

For research use only.