

Product Name: Casein Kinase Iy1 Rabbit Polyclonal Antibody
Catalog #: APRab07943

Summary

Production Name	Casein Kinase Iy1 Rabbit Polyclonal Antibody
Description	Rabbit Polyclonal Antibody
Host	Rabbit
Application	WB,ELISA
Reactivity	Human,Mouse,Rat,Monkey

Performance

Conjugation	Unconjugated
Modification	Unmodified
Isotype	IgG
Clonality	Polyclonal
Form	Liquid
Storage	Store at 4°C short term. Aliquot and store at -20°C long term. Avoid freeze/thaw cycles.
Buffer	Liquid in PBS containing 50% glycerol, 0.5% BSA and 0.02% New type preservative N.
Purification	Affinity purification

Immunogen

Gene Name	CSNK1G1
Alternative Names	CSNK1G1; Casein kinase I isoform gamma-1; CKI-gamma 1
Gene ID	53944.0
SwissProt ID	Q9HCP0.The antiserum was produced against synthesized peptide derived from human CKI-gamma1. AA range:1-50

Application

Dilution Ratio	WB 1:500 - 1:2000. ELISA: 1:20000
Molecular Weight	49kD

Product Name: Casein Kinase I γ 1 Rabbit Polyclonal Antibody
Catalog #: APRab07943

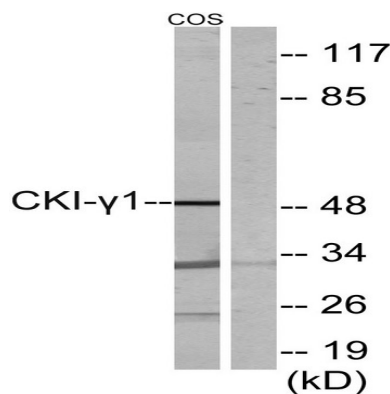
Background

This gene encodes a member of the casein kinase I gene family. This family is comprised of serine/threonine kinases that phosphorylate acidic proteins such as caseins. The encoded kinase plays a role in cell cycle checkpoint arrest in response to stalled replication forks by phosphorylating Claspin. A mutation in this gene may be associated with non-syndromic early-onset epilepsy (NSEOE). [provided by RefSeq, Jul 2016], catalytic activity: ATP + a protein = ADP + a phosphoprotein., function: Casein kinases are operationally defined by their preferential utilization of acidic proteins such as caseins as substrates. It can phosphorylate a large number of proteins. Participates in Wnt signaling., PTM: Autophosphorylated., similarity: Belongs to the protein kinase superfamily., similarity: Belongs to the protein kinase superfamily. CK1 Ser/Thr protein kinase family. Casein kinase I subfamily., similarity: Contains 1 protein kinase domain., subunit: Monomer.,

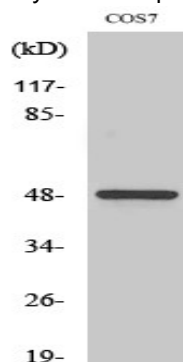
Research Area

Hedgehog;

Image Data



Western blot analysis of lysates from COS7 cells, using CKI-gamma1 Antibody. The lane on the right is blocked with the synthesized peptide.



Western Blot analysis of various cells using Casein Kinase I γ 1 Polyclonal Antibody

**Product Name: Casein Kinase Iy1 Rabbit Polyclonal
Antibody**
Catalog #: APRab07943



Note

For research use only.