

Product Name: Cardiostrophin-1 Rabbit Polyclonal Antibody
Catalog #: APRab07929

Summary

Production Name	Cardiostrophin-1 Rabbit Polyclonal Antibody
Description	Rabbit Polyclonal Antibody
Host	Rabbit
Application	WB
Reactivity	Human,Mouse,Rat

Performance

Conjugation	Unconjugated
Modification	Unmodified
Isotype	IgG
Clonality	Polyclonal
Form	Liquid
Storage	Store at 4°C short term. Aliquot and store at -20°C long term. Avoid freeze/thaw cycles.
Buffer	Liquid in PBS containing 50% glycerol, 0.5% BSA and 0.02% New type preservative N.
Purification	Affinity purification

Immunogen

Gene Name	CTF1
Alternative Names	Cardiostrophin-1 (CT-1)
Gene ID	1489.0
SwissProt ID	Q16619.Synthesized peptide derived from human Cardiostrophin-1. at AA range: 151-200

Application

Dilution Ratio	WB 1:500-2000, ELISA 1:10000-20000
Molecular Weight	23kD

Background

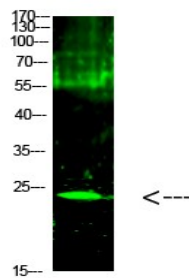
Product Name: Cardiotrophin-1 Rabbit Polyclonal Antibody
Catalog #: APRab07929

The protein encoded by this gene is a secreted cytokine that induces cardiac myocyte hypertrophy in vitro. It has been shown to bind and activate the ILST/gp130 receptor. Two transcript variants encoding different isoforms have been found for this gene. [provided by RefSeq, Dec 2008],function:Induces cardiac myocyte hypertrophy in vitro. Binds to and activates the ILST/gp130 receptor.,similarity:Belongs to the IL-6 superfamily.,tissue specificity:Highly expressed in heart, skeletal muscle, prostate and ovary. Lower levels in lung, kidney, pancreas, thymus, testis and small intestine. Little or no expression in brain, placenta, liver, spleen, colon or peripheral blood leukocytes.,

Research Area

Cytokine-cytokine receptor interaction;Jak_STAT;

Image Data



Western Blot analysis of 1,mouse-kidney cells using primary antibody diluted at 1:1000 (4°C overnight) . Secondary antibody: Goat Anti-rabbit IgG IRDye 800 (diluted at 1:5000, 25°C, 1 hour)

Note

For research use only.