

---

## Summary

<b>Production Name</b>	CARD 6 Rabbit Polyclonal Antibody
<b>Description</b>	Rabbit Polyclonal Antibody
<b>Host</b>	Rabbit
<b>Application</b>	IF,IHC,WB,
<b>Reactivity</b>	Human

## Performance

<b>Conjugation</b>	Unconjugated
<b>Modification</b>	Unmodified
<b>Isotype</b>	IgG
<b>Clonality</b>	Polyclonal
<b>Form</b>	Liquid
<b>Storage</b>	Store at 4°C short term. Aliquot and store at -20°C long term. Avoid freeze/thaw cycles.
<b>Buffer</b>	Liquid in PBS containing 50% glycerol, 0.5% BSA and 0.02% New type preservative N.
<b>Purification</b>	Affinity purification

## Immunogen

<b>Gene Name</b>	CARD6
<b>Alternative Names</b>	CARD6; Caspase recruitment domain-containing protein 6
<b>Gene ID</b>	84674.0
<b>SwissProt ID</b>	Q9BX69.The antiserum was produced against synthesized peptide derived from human CARD6. AA range:1-50

## Application

<b>Dilution Ratio</b>	WB 1:500 - 1:2000 IHC 1:100 - 1:300. IF 1:200 - 1:1000. ELISA: 1:10000. Not yet tested in other applications.
<b>Molecular Weight</b>	116kD

**Product Name: CARD 6 Rabbit Polyclonal Antibody**  
**Catalog #: APRab07926**



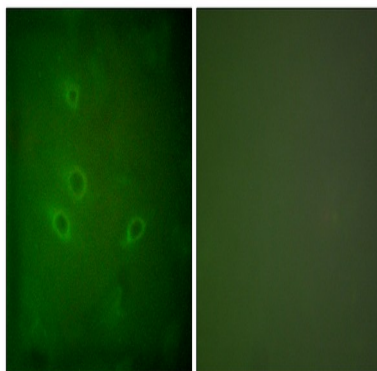
## Background

This gene encodes a protein that contains a caspase recruitment domain (CARD), an antiparallel six-helical bundle that mediates homotypic protein-protein interactions. The encoded protein is a microtubule-associated protein that has been shown to interact with receptor-interacting protein kinases and positively modulate signal transduction pathways converging on activation of the inducible transcription factor NF- $\kappa$ B. [provided by RefSeq, Jul 2008],function:May be involved in apoptosis.,similarity:Contains 1 CARD domain.,

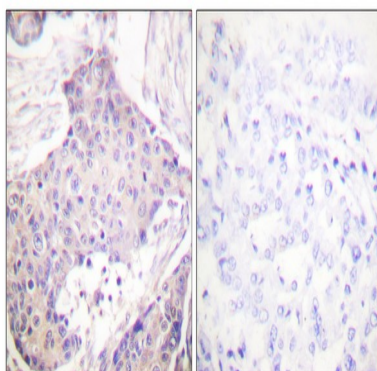
## Research Area

NOD-like receptor;

## Image Data

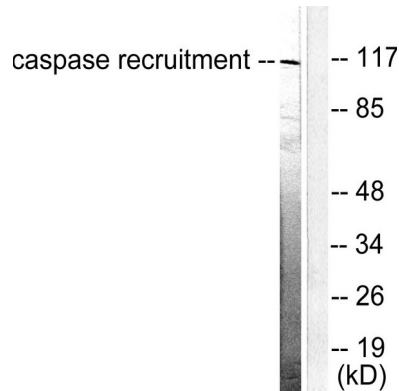


Immunofluorescence analysis of HeLa cells, using CARD6 Antibody. The picture on the right is blocked with the synthesized peptide.



Immunohistochemistry analysis of paraffin-embedded human breast carcinoma tissue, using CARD6 Antibody. The picture on the right is blocked with the synthesized peptide.

**Product Name: CARD 6 Rabbit Polyclonal Antibody**  
**Catalog #: APRab07926**



Western blot analysis of lysates from HeLa cells, using CARD6 Antibody. The lane on the right is blocked with the synthesized peptide.



Western Blot analysis of various cells using CARD 6 Polyclonal Antibody

## Note

For research use only.