
Summary

Production Name	CaMKV Rabbit Polyclonal Antibody
Description	Rabbit Polyclonal Antibody
Host	Rabbit
Application	IF,IHC,WB,
Reactivity	Human,Mouse,Rat

Performance

Conjugation	Unconjugated
Modification	Unmodified
Isotype	IgG
Clonality	Polyclonal
Form	Liquid
Storage	Store at 4°C short term. Aliquot and store at -20°C long term. Avoid freeze/thaw cycles.
Buffer	Liquid in PBS containing 50% glycerol, 0.5% BSA and 0.02% New type preservative N.
Purification	Affinity purification

Immunogen

Gene Name	CAMKV
Alternative Names	CAMKV; CaM kinase-like vesicle-associated protein
Gene ID	79012.0
SwissProt ID	Q8NCB2.The antiserum was produced against synthesized peptide derived from human CAMK5. AA range:211-260

Application

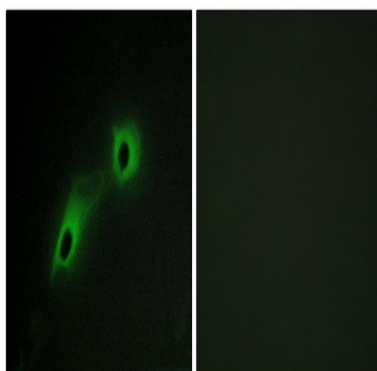
Dilution Ratio	WB 1:500 - 1:2000 IHC 1:100 - 1:300. IF 1:200 - 1:1000. ELISA: 1:10000. Not yet tested in other applications.
Molecular Weight	54kD

Background

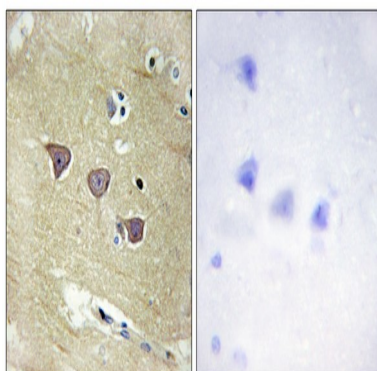
cofactor:Calcium.,domain:The protein kinase domain is predicted to be catalytically inactive.,function:Does not appear to have detectable kinase activity.,similarity:Belongs to the protein kinase superfamily. CAMK Ser/Thr protein kinase family.,similarity:Contains 1 protein kinase domain.,subcellular location:Predominantly observed in association with the plasma membrane of soma and in neurites, both axons and dendrites. May be associated with vesicular structures.,subunit:Interacts with calmodulin, in the presence of calcium.,cofactor:Calcium.,domain:The protein kinase domain is predicted to be catalytically inactive.,function:Does not appear to have detectable kinase activity.,similarity:Belongs to the protein kinase superfamily. CAMK Ser/Thr protein kinase family.,similarity:Contains 1 protein kinase domain.,subcellular location:Predominantly observed in association with the plasma membrane of soma and in neurites, both axons and dendrites. May be associated with vesicular structures.,subunit:Interacts with calmodulin, in the presence of calcium.,

Research Area

Image Data



Immunofluorescence analysis of HeLa cells, using CAMK5 Antibody. The picture on the right is blocked with the synthesized peptide.

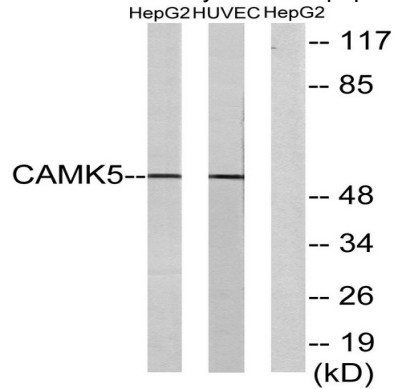


Immunohistochemistry analysis of paraffin-embedded human brain tissue, using CAMK5 Antibody. The picture on the right

Product Name: CaMKV Rabbit Polyclonal Antibody
Catalog #: APRab07897

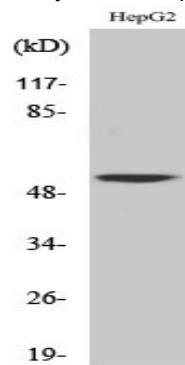


is blocked with the synthesized peptide.



Western blot analysis of lysates from HepG2 and HUVEC cells, using CAMK5 Antibody. The lane on the right is blocked with

the synthesized peptide.



Western Blot analysis of various cells using CaMKV Polyclonal Antibody

Note

For research use only.