
Summary

Production Name	Calcitonin Rabbit Polyclonal Antibody
Description	Rabbit Polyclonal Antibody
Host	Rabbit
Application	WB,IHC,
Reactivity	Human,Rat,Mouse

Performance

Conjugation	Unconjugated
Modification	Unmodified
Isotype	IgG
Clonality	Polyclonal
Form	Liquid
Storage	Store at 4°C short term. Aliquot and store at -20°C long term. Avoid freeze/thaw cycles.
Buffer	Liquid in PBS containing 50% glycerol, 0.5% BSA and 0.02% New type preservative N.
Purification	Affinity purification

Immunogen

Gene Name	CALCA CALC1
Alternative Names	Calcitonin [Cleaved into: Calcitonin; Katalcalcin (Calcitonin carboxyl-terminal peptide;CCP;PDN-21)]
Gene ID	796.0
SwissProt ID	P01258.Synthetic peptide from human protein at AA range: 80-141

Application

Dilution Ratio	IHC-p: 100-300.WB 1:500-2000, ELISA 1:10000-20000.
Molecular Weight	16kD

Background

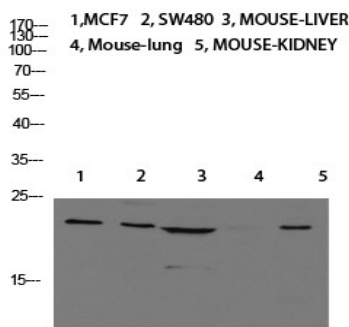
Product Name: Calcitonin Rabbit Polyclonal Antibody
Catalog #: APRab07850



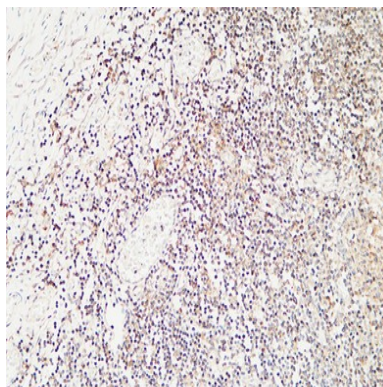
function: Calcitonin causes a rapid but short-lived drop in the level of calcium and phosphate in blood by promoting the incorporation of those ions in the bones., function: CGRP induces vasodilation. It dilates a variety of vessels including the coronary, cerebral and systemic vasculature. Its abundance in the CNS also points toward a neurotransmitter or neuromodulator role. It also elevates platelet cAMP., function: Katalcalcin is a potent plasma calcium-lowering peptide., online information: Calcitonin entry, similarity: Belongs to the calcitonin family., function: Calcitonin causes a rapid but short-lived drop in the level of calcium and phosphate in blood by promoting the incorporation of those ions in the bones., function: CGRP induces vasodilation. It dilates a variety of vessels including the coronary, cerebral and systemic vasculature. Its abundance in the CNS also points toward a neurotransmitter or neuromodulator role. It also elevates platelet cAMP., function: Katalcalcin is a potent plasma calcium-lowering peptide., online information: Calcitonin entry, similarity: Belongs to the calcitonin family.,

Research Area

Image Data



Western blot analysis of Jurkat U937 Raji mouse-eye lysate, antibody was diluted at 1000. Secondary antibody was diluted at 1:20000

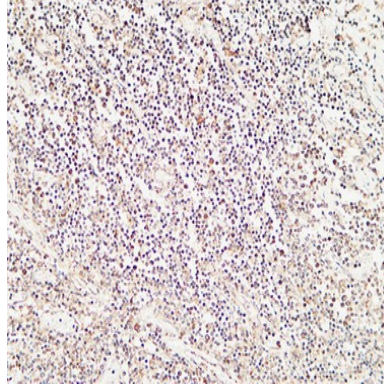


Immunohistochemical analysis of paraffin-embedded Human Amygdala. 1, Antibody was diluted at 1:200 (4°, overnight) . 2, High-pressure and temperature EDTA, pH8.0 was used for antigen retrieval. 3, Secondary antibody was diluted at

Product Name: Calcitonin Rabbit Polyclonal Antibody
Catalog #: APRab07850

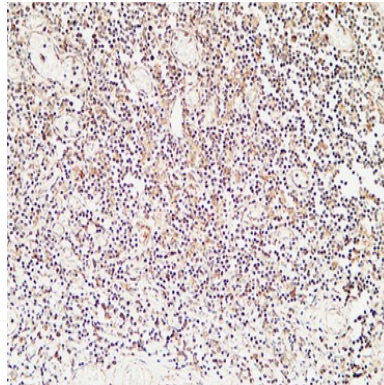


1:200 (room temperature, 30min) .



Immunohistochemical analysis of paraffin-embedded Human Amygdala. 1, Antibody was diluted at 1:200 (4°,overnight) . 2, High-pressure and temperature EDTA, pH8.0 was used for antigen retrieval. 3,Secondary antibody was diluted at

1:200 (room temperature, 30min) .



Immunohistochemical analysis of paraffin-embedded Human Amygdala. 1, Antibody was diluted at 1:200 (4°,overnight) . 2, High-pressure and temperature EDTA, pH8.0 was used for antigen retrieval. 3,Secondary antibody was diluted at

1:200 (room temperature, 30min) .

Note

For research use only.