

**Product Name: CAH7 Rabbit Polyclonal Antibody**  
**Catalog #: APRab07843**



## Summary

<b>Production Name</b>	CAH7 Rabbit Polyclonal Antibody
<b>Description</b>	Rabbit Polyclonal Antibody
<b>Host</b>	Rabbit
<b>Application</b>	WB
<b>Reactivity</b>	Human,Mouse

## Performance

<b>Conjugation</b>	Unconjugated
<b>Modification</b>	Unmodified
<b>Isotype</b>	IgG
<b>Clonality</b>	Polyclonal
<b>Form</b>	Liquid
<b>Storage</b>	Store at 4°C short term. Aliquot and store at -20°C long term. Avoid freeze/thaw cycles.
<b>Buffer</b>	Liquid in PBS containing 50% glycerol, and 0.02% New type preservative N.
<b>Purification</b>	Affinity purification

## Immunogen

<b>Gene Name</b>	CA7
<b>Alternative Names</b>	
<b>Gene ID</b>	766.0
<b>SwissProt ID</b>	P43166.Synthesized peptide derived from part region of human protein

## Application

<b>Dilution Ratio</b>	WB 1:500-2000 ELISA 1:5000-20000
<b>Molecular Weight</b>	29kD

## Background

Carbonic anhydrases are a large family of zinc metalloenzymes that catalyze the reversible hydration of carbon dioxide. They participate in a variety of biological processes, including respiration, calcification, acid-base balance, bone resorption,

**Product Name: CAH7 Rabbit Polyclonal Antibody**  
**Catalog #: APRab07843**

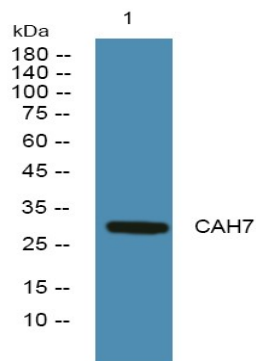


and the formation of aqueous humor, cerebrospinal fluid, saliva, and gastric acid. They show extensive diversity in tissue distribution and in their subcellular localization. The cytosolic protein encoded by this gene is predominantly expressed in the salivary glands. Alternative splicing in the coding region results in multiple transcript variants encoding different isoforms. [provided by RefSeq, Jul 2008],catalytic activity:H(2)CO(3) = CO(2) + H(2)O.,cofactor:Zinc.,function:Reversible hydration of carbon dioxide.,similarity:Belongs to the alpha-carbonic anhydrase family.,

## Research Area

Nitrogen metabolism;

## Image Data



Western blot analysis of lysates from Jarkat cells, primary antibody was diluted at 1:1000, 4° over night

## Note

For research use only.