
Summary

Production Name	CAGE-1 Rabbit Polyclonal Antibody
Description	Rabbit Polyclonal Antibody
Host	Rabbit
Application	IHC, WB,
Reactivity	Human, Rat, Mouse

Performance

Conjugation	Unconjugated
Modification	Unmodified
Isotype	IgG
Clonality	Polyclonal
Form	Liquid
Storage	Store at 4°C short term. Aliquot and store at -20°C long term. Avoid freeze/thaw cycles.
Buffer	Liquid in PBS containing 50% glycerol, 0.5% BSA and 0.02% New type preservative N.
Purification	Affinity purification

Immunogen

Gene Name	CAGE1
Alternative Names	CAGE1; CTAG3; Cancer-associated gene 1 protein; CAGE-1; Cancer/testis antigen 3; CT3
Gene ID	285782.0
SwissProt ID	Q8TC20. The antiserum was produced against synthesized peptide derived from human CAGE1. AA range: 711-760

Application

Dilution Ratio	WB 1:500 - 1:2000. IHC 1:100 - 1:300. ELISA: 1:40000..
Molecular Weight	90kD

Background

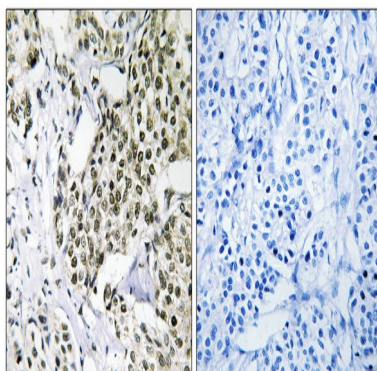
Product Name: CAGE-1 Rabbit Polyclonal Antibody
Catalog #: APRab07840



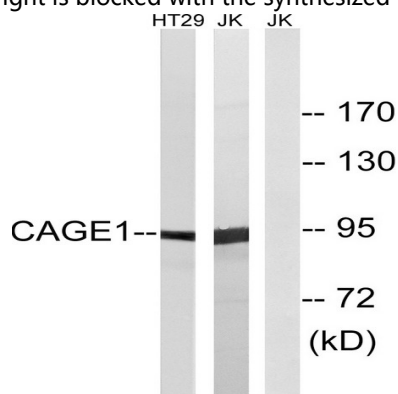
tissue specificity:Testis-specific expression in normal tissues, but wide expression among cancer tissues and cell lines.,tissue specificity:Testis-specific expression in normal tissues, but wide expression among cancer tissues and cell lines.,

Research Area

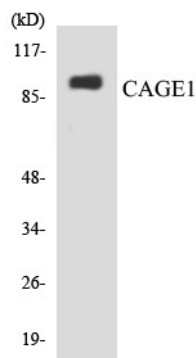
Image Data



Immunohistochemistry analysis of paraffin-embedded human breast carcinoma tissue, using CAGE1 Antibody. The picture on the right is blocked with the synthesized peptide.



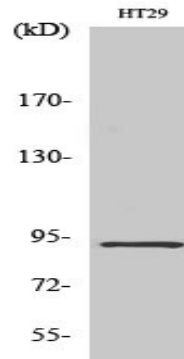
Western blot analysis of lysates from HT-29 and Jurkat cells, using CAGE1 Antibody. The lane on the right is blocked with the synthesized peptide.



Product Name: CAGE-1 Rabbit Polyclonal Antibody
Catalog #: APRab07840



Western blot analysis of the lysates from HepG2 cells using CAGE1 antibody.



Western Blot analysis of various cells using CAGE-1 Polyclonal Antibody diluted at 1: 2000

Note

For research use only.