
Summary

Production Name	Cadherin-26 Rabbit Polyclonal Antibody
Description	Rabbit Polyclonal Antibody
Host	Rabbit
Application	WB,IF,ELISA
Reactivity	Human,Rat,Mouse

Performance

Conjugation	Unconjugated
Modification	Unmodified
Isotype	IgG
Clonality	Polyclonal
Form	Liquid
Storage	Store at 4°C short term. Aliquot and store at -20°C long term. Avoid freeze/thaw cycles.
Buffer	Liquid in PBS containing 50% glycerol, 0.5% BSA and 0.02% New type preservative N.
Purification	Affinity purification

Immunogen

Gene Name	CDH26
Alternative Names	CDH26; Cadherin-like protein 26; Cadherin-like protein VR20
Gene ID	60437.0
SwissProt ID	Q8IXH8.The antiserum was produced against synthesized peptide derived from human CDH26. AA range:11-60

Application

Dilution Ratio	WB 1:500 - 1:2000. IF 1:200 - 1:1000. ELISA: 1:10000. Not yet tested in other applications.
Molecular Weight	95kD

Product Name: Cadherin-26 Rabbit Polyclonal Antibody
Catalog #: APRab07834



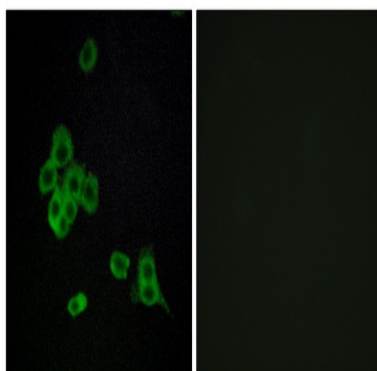
Background

Cadherins are a family of adhesion molecules that mediate Ca²⁺-dependent cell-cell adhesion in all solid tissues and modulate a wide variety of processes, including cell polarization and migration. Cadherin domains occur as repeats in the extracellular region and are thought to contribute to the sorting of heterogeneous cell types and the maintenance of orderly structures such as epithelium. This gene encodes a cadherin domain-containing protein whose specific function has not yet been determined. Alternative splicing occurs at this locus and two transcript variants, encoding distinct proteins, have been identified. [provided by RefSeq, Jul 2008],function:Cadherins are calcium dependent cell adhesion proteins. They preferentially interact with themselves in a homophilic manner in connecting cells; cadherins may thus contribute to the sorting of heterogeneous cell types.,similarity:Contains 4 cadherin domains,

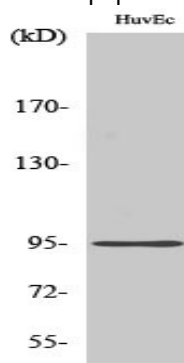
Research Area

Adherens_Junction

Image Data



Immunofluorescence analysis of MCF7 cells, using CDH26 Antibody. The picture on the right is blocked with the synthesized peptide.



Western Blot analysis of various cells using Cadherin-26 Polyclonal Antibody

Product Name: Cadherin-26 Rabbit Polyclonal Antibody
Catalog #: APRab07834



Note

For research use only.