
Summary

Production Name	Cadherin-18 Rabbit Polyclonal Antibody
Description	Rabbit Polyclonal Antibody
Host	Rabbit
Application	WB,ELISA
Reactivity	Human,Mouse

Performance

Conjugation	Unconjugated
Modification	Unmodified
Isotype	IgG
Clonality	Polyclonal
Form	Liquid
Storage	Store at 4°C short term. Aliquot and store at -20°C long term. Avoid freeze/thaw cycles.
Buffer	Liquid in PBS containing 50% glycerol, 0.5% BSA and 0.02% New type preservative N.
Purification	Affinity purification

Immunogen

Gene Name	CDH18
Alternative Names	CDH18; CDH14; Cadherin-18; Cadherin-14
Gene ID	1016.0
SwissProt ID	Q13634.The antiserum was produced against synthesized peptide derived from human CDH18. AA range:101-150

Application

Dilution Ratio	WB 1:500 - 1:2000. ELISA: 1:10000
Molecular Weight	88kD

Background

Product Name: Cadherin-18 Rabbit Polyclonal Antibody
Catalog #: APRab07828

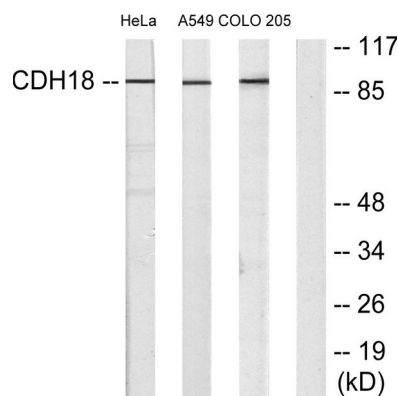


This gene encodes a type II classical cadherin from the cadherin superfamily of integral membrane proteins that mediate calcium-dependent cell-cell adhesion. Mature cadherin proteins are composed of a large N-terminal extracellular domain, a single membrane-spanning domain, and a small, highly conserved C-terminal cytoplasmic domain. Type II (atypical) cadherins are defined based on their lack of a HAV cell adhesion recognition sequence specific to type I cadherins. This particular cadherin is expressed specifically in the central nervous system and is putatively involved in synaptic adhesion, axon outgrowth and guidance. Alternatively spliced transcript variants encoding different isoforms have been found for this gene. [provided by RefSeq, May 2014],function:Cadherins are calcium dependent cell adhesion proteins. They preferentially interact with themselves in a homophilic manner in connecting cells; cadherins may thus contribute to the sorting of heterogeneous cell types.,similarity:Contains 5 cadherin domains,.

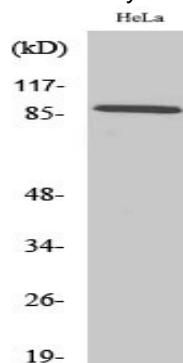
Research Area

Adherens_Junction

Image Data



Western blot analysis of lysates from HeLa, A549, and COLO205 cells, using CDH18 Antibody. The lane on the right is blocked with the synthesized peptide.



Western Blot analysis of various cells using Cadherin-18 Polyclonal Antibody

Product Name: Cadherin-18 Rabbit Polyclonal Antibody
Catalog #: APRab07828



Note

For research use only.