

## Summary

<b>Production Name</b>	CaBP7 Rabbit Polyclonal Antibody
<b>Description</b>	Rabbit Polyclonal Antibody
<b>Host</b>	Rabbit
<b>Application</b>	WB
<b>Reactivity</b>	Human,Mouse,Rat

## Performance

<b>Conjugation</b>	Unconjugated
<b>Modification</b>	Unmodified
<b>Isotype</b>	IgG
<b>Clonality</b>	Polyclonal
<b>Form</b>	Liquid
<b>Storage</b>	Store at 4°C short term. Aliquot and store at -20°C long term. Avoid freeze/thaw cycles.
<b>Buffer</b>	Liquid in PBS containing 50% glycerol, 0.5% BSA and 0.02% New type preservative N.
<b>Purification</b>	Affinity purification

## Immunogen

<b>Gene Name</b>	CABP7
<b>Alternative Names</b>	CABP7; CALN2; Calcium-binding protein 7; CaBP7; Calneuron II; Calneuron-2
<b>Gene ID</b>	164633.0
<b>SwissProt ID</b>	Q86V35.The antiserum was produced against synthesized peptide derived from human CABP7. AA range:1-50

## Application

<b>Dilution Ratio</b>	WB 1:500-1:2000. ELISA: 1:10000.
<b>Molecular Weight</b>	25kD

## Background

similarity:Contains 2 EF-hand domains.,similarity:Contains 2 EF-hand domains.,

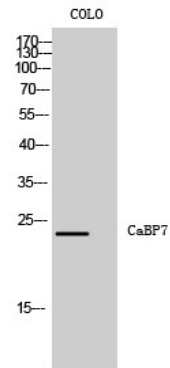
**Product Name: CaBP7 Rabbit Polyclonal Antibody**  
**Catalog #: APRab07809**



---

## Research Area

## Image Data



Western Blot analysis of COLO cells using CaBP7 Polyclonal Antibody diluted at 1: 1000

## Note

For research use only.