

---

## Summary

<b>Production Name</b>	Cables2 Rabbit Polyclonal Antibody
<b>Description</b>	Rabbit Polyclonal Antibody
<b>Host</b>	Rabbit
<b>Application</b>	WB,IF,ELISA
<b>Reactivity</b>	Human,Mouse

## Performance

<b>Conjugation</b>	Unconjugated
<b>Modification</b>	Unmodified
<b>Isotype</b>	IgG
<b>Clonality</b>	Polyclonal
<b>Form</b>	Liquid
<b>Storage</b>	Store at 4°C short term. Aliquot and store at -20°C long term. Avoid freeze/thaw cycles.
<b>Buffer</b>	Liquid in PBS containing 50% glycerol, 0.5% BSA and 0.02% New type preservative N.
<b>Purification</b>	Affinity purification

## Immunogen

<b>Gene Name</b>	CABLES2
<b>Alternative Names</b>	CABLES2; C20orf150; CDK5 and ABL1 enzyme substrate 2; Interactor with CDK3 2; Ik3-2
<b>Gene ID</b>	81928.0
<b>SwissProt ID</b>	Q9BTV7.The antiserum was produced against synthesized peptide derived from human Ik3-2. AA range:91-140

## Application

<b>Dilution Ratio</b>	WB 1:500 - 1:2000. IF 1:200 - 1:1000. ELISA: 1:10000. Not yet tested in other applications.
<b>Molecular Weight</b>	60kD

**Product Name: Cables2 Rabbit Polyclonal Antibody**  
**Catalog #: APRab07806**

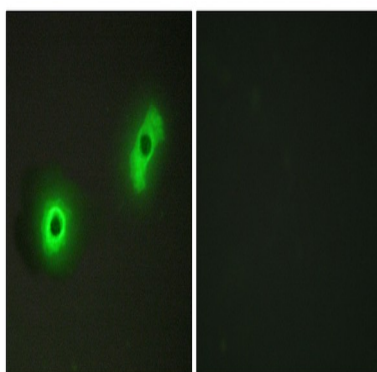


## Background

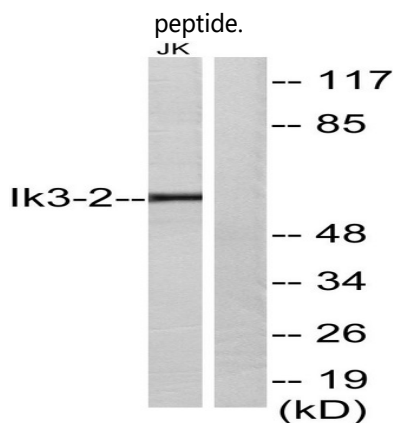
function:Unknown. Probably involved in G1-S cell cycle transition.,similarity:Belongs to the cyclin family.,subunit:Binds to CDK3, CDK5 and ABL1. The C-terminal cyclin-box-like region binds to CDK5.,function:Unknown. Probably involved in G1-S cell cycle transition.,similarity:Belongs to the cyclin family.,subunit:Binds to CDK3, CDK5 and ABL1. The C-terminal cyclin-box-like region binds to CDK5.,

## Research Area

## Image Data



Immunofluorescence analysis of A549 cells, using Ik3-2 Antibody. The picture on the right is blocked with the synthesized



Western blot analysis of lysates from Jurkat cells, using Ik3-2 Antibody. The lane on the right is blocked with the synthesized peptide.

## Note

For research use only.