
Summary

Production Name	Cables1 Rabbit Polyclonal Antibody
Description	Rabbit Polyclonal Antibody
Host	Rabbit
Application	WB,ELISA
Reactivity	Human,Mouse

Performance

Conjugation	Unconjugated
Modification	Unmodified
Isotype	IgG
Clonality	Polyclonal
Form	Liquid
Storage	Store at 4°C short term. Aliquot and store at -20°C long term. Avoid freeze/thaw cycles.
Buffer	Liquid in PBS containing 50% glycerol, 0.5% BSA and 0.02% New type preservative N.
Purification	Affinity purification

Immunogen

Gene Name	CABLES1
Alternative Names	CABLES1; CABLES; CDK5 and ABL1 enzyme substrate 1; Interactor with CDK3 1; Ik3-1
Gene ID	91768.0
SwissProt ID	Q8TDN4.The antiserum was produced against synthesized peptide derived from human Ik3-1. AA range:561-610

Application

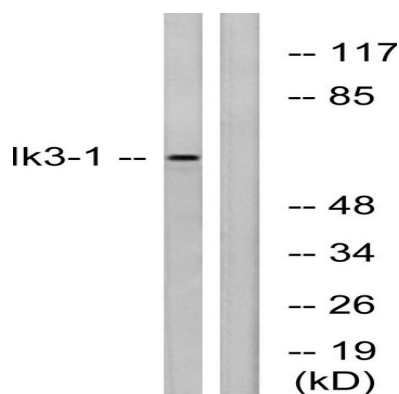
Dilution Ratio	WB 1:500 - 1:2000. ELISA: 1:20000
Molecular Weight	67kD

Background

This gene encodes a protein involved in regulation of the cell cycle through interactions with several cyclin-dependent kinases. One study (PMID: 16177568) reported aberrant splicing of transcripts from this gene which results in removal of the cyclin binding domain only in human cancer cells, and reduction in gene expression was shown in colorectal cancers (PMID: 17982127). Multiple transcript variants encoding different isoforms have been found for this gene. [provided by RefSeq, Jan 2012], developmental stage: Expression in the endometrial epithelium fluctuates during the menstrual cycle, being greater during the secretory phase when compared with the proliferative phase., disease: Defects in CABLES1 are associated with some colon and squamous cancers., function: Cyclin-dependent kinase binding protein. Enhances cyclin-dependent kinase tyrosine phosphorylation by nonreceptor tyrosine kinases, such as that of CDK5 by activated ABL1, which leads to increased CDK5 activity and is critical for neuronal development, and that of CDK2 by WEE1, which leads to decreased CDK2 activity and growth inhibition. Positively affects neuronal outgrowth. Plays a role as a regulator for p53/p73-induced cell death., induction: Up-regulated by progesterone and down-regulated by estrogen in benign endometrium., PTM: Phosphorylated on Ser-313 by CCNE1/CDK3. Phosphorylated on serine/threonine residues by CDK5 and on tyrosine residues by ABL1. Also phosphorylated in vitro by CCNA1/CDK2, CCNE1/CDK2, CCNA1/CDK3 and CCNE1/CDK3., similarity: Belongs to the cyclin family., subcellular location: Located in the cell body and proximal region of the developing axonal shaft of immature neurons. Located in axonal growth cone, but not in the distal part of the axon shaft or in dendritic growth cone of mature neurons., subunit: Found in a complex with p53/TP53. Found in a number of complexes with CDK2, CDK3, CDK5, ABL1, TDRD7, PCTK2, CCNA1, CCNE1 and TP73. Interacts with CDK2, CDK3, CDK5, ABL1 and TDRD7., tissue specificity: Expressed in breast, pancreas, colon, head and neck (at protein level). Strongly decreased in more than half of cases of atypical endometrial hyperplasia and in more than 90% of endometrial cancers.,

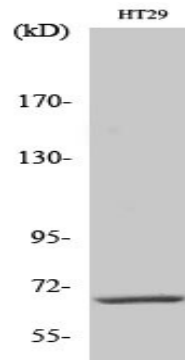
Research Area

Image Data



Western blot analysis of lysates from LOVO cells, using Ik3-1 Antibody. The lane on the right is blocked with the synthesized peptide.

Product Name: Cables1 Rabbit Polyclonal Antibody
Catalog #: APRab07805



Western Blot analysis of various cells using Cables1 Polyclonal Antibody diluted at 1:500

Note

For research use only.