

**Product Name: CA III Rabbit Polyclonal Antibody**  
**Catalog #: APRab07765**



---

## Summary

|                        |                                   |
|------------------------|-----------------------------------|
| <b>Production Name</b> | CA III Rabbit Polyclonal Antibody |
| <b>Description</b>     | Rabbit Polyclonal Antibody        |
| <b>Host</b>            | Rabbit                            |
| <b>Application</b>     | WB,ELISA                          |
| <b>Reactivity</b>      | Human,Mouse,Rat                   |

## Performance

|                     |  |
|---------------------|--|
| <b>Conjugation</b>  | Unconjugated   |
| <b>Modification</b> | Unmodified   |
| <b>Isotype</b>      | IgG  |
| <b>Clonality</b>    | Polyclonal   |
| <b>Form</b>         | Liquid   |
| <b>Storage</b>      | Store at 4°C short term. Aliquot and store at -20°C long term. Avoid freeze/thaw cycles. |
| <b>Buffer</b>       | Liquid in PBS containing 50% glycerol, 0.5% BSA and 0.02% New type preservative N.       |
| <b>Purification</b> | Affinity purification  |

## Immunogen

|                          |  |
|--------------------------|--|
| <b>Gene Name</b>         | CA3  |
| <b>Alternative Names</b> | CA3; Carbonic anhydrase 3; Carbonate dehydratase III; Carbonic anhydrase III; CA-III                   |
| <b>Gene ID</b>           | 761.0  |
| <b>SwissProt ID</b>      | P07451.The antiserum was produced against synthesized peptide derived from human CA3. AA range:141-190 |

## Application

|                         |                                   |
|-------------------------|-----------------------------------|
| <b>Dilution Ratio</b>   | WB 1:500 - 1:2000. ELISA: 1:20000 |
| <b>Molecular Weight</b> | 38kD                              |

## Background

---

**Product Name: CA III Rabbit Polyclonal Antibody**  
**Catalog #: APRab07765**

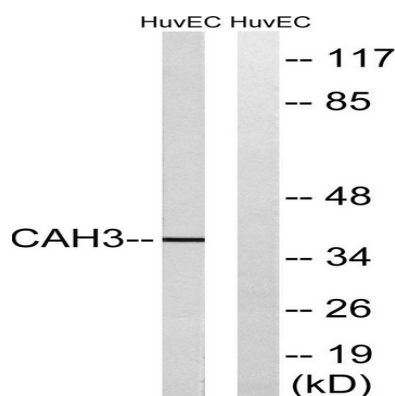


Carbonic anhydrase III (CAIII) is a member of a multigene family (at least six separate genes are known) that encodes carbonic anhydrase isozymes. These carbonic anhydrases are a class of metalloenzymes that catalyze the reversible hydration of carbon dioxide and are differentially expressed in a number of cell types. The expression of the CA3 gene is strictly tissue specific and present at high levels in skeletal muscle and much lower levels in cardiac and smooth muscle. A proportion of carriers of Duchenne muscle dystrophy have a higher CA3 level than normal. The gene spans 10.3 kb and contains seven exons and six introns. [provided by RefSeq, Oct 2008],catalytic activity:H(2)CO(3) = CO(2) + H(2)O.,cofactor:Zinc.,developmental stage:At 6 weeks gestation, transcripts accumulate at low levels in the somites and at high levels throughout the notochord. As gestation continues, CA3 becomes abundant in all developing muscle masses and continues at high to moderate levels in the notochord.,function:Reversible hydration of carbon dioxide.,similarity:Belongs to the alpha-carbonic anhydrase family.,tissue specificity:Muscle specific.,

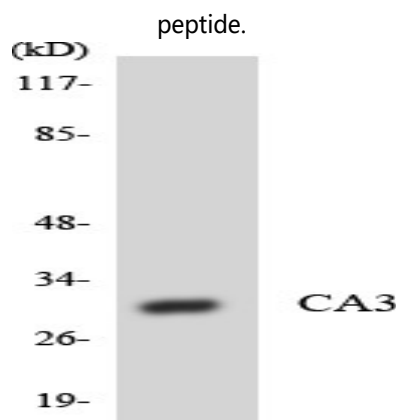
**Research Area**

Nitrogen metabolism;

**Image Data**



Western blot analysis of lysates from HUVEC cells, using CA3 Antibody. The lane on the right is blocked with the synthesized peptide.



Western blot analysis of the lysates from HUVEC cells using CA3 antibody.

**Product Name: CA III Rabbit Polyclonal Antibody**  
**Catalog #: APRab07765**

---



**Note**

For research use only.