

Product Name: CA II Rabbit Polyclonal Antibody
Catalog #: APRab07764



Summary

Production Name	CA II Rabbit Polyclonal Antibody
Description	Rabbit Polyclonal Antibody
Host	Rabbit
Application	IHC, WB, ELISA
Reactivity	Human, Rat

Performance

Conjugation	Unconjugated
Modification	Unmodified
Isotype	IgG
Clonality	Polyclonal
Form	Liquid
Storage	Store at 4°C short term. Aliquot and store at -20°C long term. Avoid freeze/thaw cycles.
Buffer	Liquid in PBS containing 50% glycerol, 0.5% BSA and 0.02% New type preservative N.
Purification	Affinity purification

Immunogen

Gene Name	CA2
Alternative Names	CA2; Carbonic anhydrase 2; Carbonate dehydratase II; Carbonic anhydrase C; CAC; Carbonic anhydrase II; CA-II
Gene ID	760.0
SwissProt ID	P00918. The antiserum was produced against synthesized peptide derived from human CA II. AA range:180-229

Application

Dilution Ratio	WB 1:500 - 1:2000. IHC 1:100 - 1:300. ELISA: 1:40000..
Molecular Weight	29kD

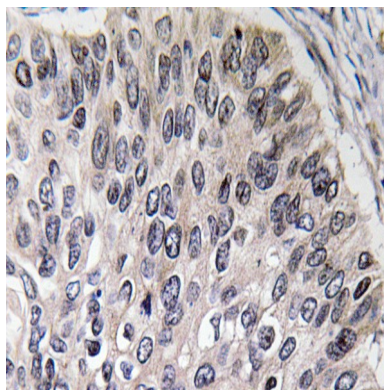
Background

The protein encoded by this gene is one of several isozymes of carbonic anhydrase, which catalyzes reversible hydration of carbon dioxide. Defects in this enzyme are associated with osteopetrosis and renal tubular acidosis. Two transcript variants encoding different isoforms have been found for this gene. [provided by RefSeq, Jun 2014],catalytic activity:H(2)CO(3) = CO(2) + H(2)O.,cofactor:Zinc.,disease:Defects in CA2 are the cause of autosomal recessive osteopetrosis type 3 (OPTB3) [MIM:259730]; also known as osteopetrosis with renal tubular acidosis, carbonic anhydrase II deficiency syndrome, Guibaud-Vainsel syndrome or marble brain disease. Osteopetrosis is a rare genetic disease characterized by abnormally dense bone, due to defective resorption of immature bone. The disorder occurs in two forms: a severe autosomal recessive form occurring in utero, infancy, or childhood, and a benign autosomal dominant form occurring in adolescence or adulthood. Autosomal recessive osteopetrosis is usually associated with normal or elevated amount of non-functional osteoclasts. OPTB3 is associated with renal tubular acidosis, cerebral calcification (marble brain disease) and in some cases with mental retardation.,function:Essential for bone resorption and osteoclast differentiation (By similarity). Reversible hydration of carbon dioxide.,similarity:Belongs to the alpha-carbonic anhydrase family.,subunit:Interacts with SLC4A4. Interaction with SLC4A7 regulates SLC4A7 transporter activity.,

Research Area

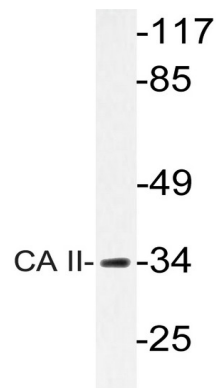
Nitrogen metabolism;

Image Data

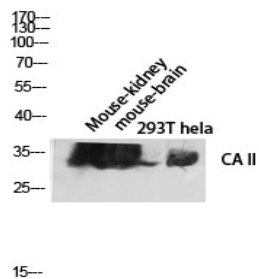


Immunohistochemistry analysis of CA II antibody in paraffin-embedded human lung carcinoma tissue.

Product Name: CA II Rabbit Polyclonal Antibody
Catalog #: APRab07764



Western blot analysis of lysate from rat heart cells, using CA II antibody.



Western blot analysis of Mouse-kidney mouse-brain 293T hela lysis using CA II antibody. Antibody was diluted at 1:2000

Note

For research use only.