
Summary

Production Name	C9 Rabbit Polyclonal Antibody
Description	Rabbit Polyclonal Antibody
Host	Rabbit
Application	WB,ELISA
Reactivity	Human,Rat,Mouse

Performance

Conjugation	Unconjugated
Modification	Unmodified
Isotype	IgG
Clonality	Polyclonal
Form	Liquid
Storage	Store at 4°C short term. Aliquot and store at -20°C long term. Avoid freeze/thaw cycles.
Buffer	Liquid in PBS containing 50% glycerol, 0.5% BSA and 0.02% New type preservative N.
Purification	Affinity purification

Immunogen

Gene Name	C9
Alternative Names	C9; Complement component C9
Gene ID	735.0
SwissProt ID	P02748.The antiserum was produced against synthesized peptide derived from human C9. AA range:181-230

Application

Dilution Ratio	WB 1:500 - 1:2000. ELISA: 1:40000. Not yet tested in other applications.
Molecular Weight	70kD

Background

Product Name: C9 Rabbit Polyclonal Antibody
Catalog #: APRab07761

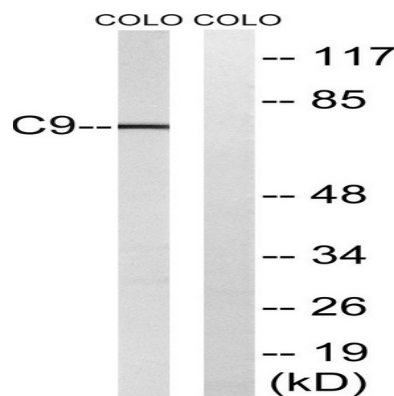


This gene encodes the final component of the complement system. It participates in the formation of the Membrane Attack Complex (MAC). The MAC assembles on bacterial membranes to form a pore, permitting disruption of bacterial membrane organization. Mutations in this gene cause component C9 deficiency. [provided by RefSeq, Feb 2009],disease:Defects in C9 are a cause of component C9 deficiency (C9D) [MIM:120940]. Patients with C9D suffer from recurrent bacterial infections, predominantly from Neisseria meningitidis.,function:C9 is the final component of the complement system to be added in the assembly of the membrane attack complex. It is able to enter lipid bilayers, forming transmembrane channels.,online information:C9 mutation db,PTM:Thrombin cleaves factor C9 to produce C9a and C9b.,similarity:Belongs to the complement C6/C7/C8/C9 family.,similarity:Contains 1 EGF-like domain.,similarity:Contains 1 LDL-receptor class A domain.,similarity:Contains 1 MACPF domain.,similarity:Contains 1 TSP type-1 domain.,

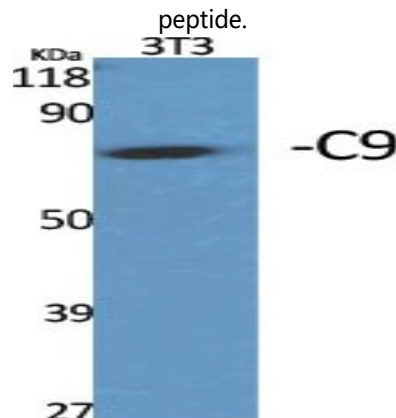
Research Area

Complement and coagulation cascades;Prion diseases;Systemic lupus erythematosus;

Image Data

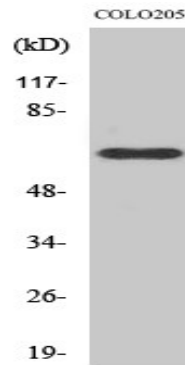


Western blot analysis of lysates from COLO cells, using C9 Antibody. The lane on the right is blocked with the synthesized peptide.



Western Blot analysis of various cells using C9 Polyclonal Antibody

Product Name: C9 Rabbit Polyclonal Antibody
Catalog #: APRab07761



Western Blot analysis of COLO205 cells using C9 Polyclonal Antibody

Note

For research use only.