

---

## Summary

<b>Production Name</b>	C7 Rabbit Polyclonal Antibody
<b>Description</b>	Rabbit Polyclonal Antibody
<b>Host</b>	Rabbit
<b>Application</b>	WB,IHC,ELISA
<b>Reactivity</b>	Human,Rat,Mouse

## Performance

<b>Conjugation</b>	Unconjugated
<b>Modification</b>	Unmodified
<b>Isotype</b>	IgG
<b>Clonality</b>	Polyclonal
<b>Form</b>	Liquid
<b>Storage</b>	Store at 4°C short term. Aliquot and store at -20°C long term. Avoid freeze/thaw cycles.
<b>Buffer</b>	Liquid in PBS containing 50% glycerol, 0.5% BSA and 0.02% New type preservative N.
<b>Purification</b>	Affinity purification

## Immunogen

<b>Gene Name</b>	C7
<b>Alternative Names</b>	C7; Complement component C7
<b>Gene ID</b>	730.0
<b>SwissProt ID</b>	P10643.The antiserum was produced against synthesized peptide derived from the N-terminal region of human C7. AA range:100-150

## Application

<b>Dilution Ratio</b>	WB 1:500 - 1:2000. IHC-p: 1:100-1:300. ELISA: 1:10000..
<b>Molecular Weight</b>	93kD

## Background

---

**Product Name: C7 Rabbit Polyclonal Antibody**  
**Catalog #: APRab07756**

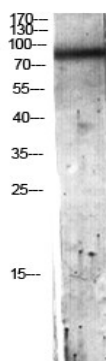


C7 is a component of the complement system. It participates in the formation of Membrane Attack Complex (MAC). People with C7 deficiency are prone to bacterial infection. [provided by RefSeq, Jul 2008],disease:Defects in C7 are a cause of component C7 deficiency (C7D) [MIM:217070]. Patients with C7D suffer from recurrent bacterial infections, predominantly from Neisseria meningitidis.,function:C7 is a constituent of the membrane attack complex. C7 binds to C5b forming the C5b-7 complex, where it serves as a membrane anchor.,online information:C7 mutation db,PTM:C7 has 28 disulfide bridges.,similarity:Belongs to the complement C6/C7/C8/C9 family.,similarity:Contains 1 EGF-like domain.,similarity:Contains 1 LDL-receptor class A domain.,similarity:Contains 1 MACPF domain.,similarity:Contains 2 Sushi (CCP/SCR) domains.,similarity:Contains 2 TSP type-1 domains.,subunit:Monomer or dimer; as a C5b-7 complex it can also form multimeric rosettes.,

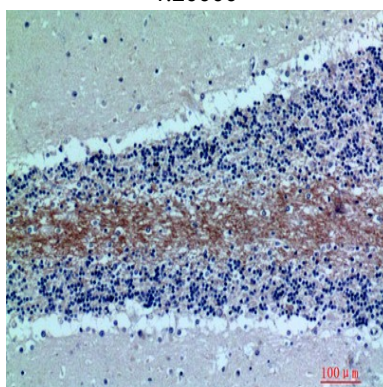
## Research Area

Complement and coagulation cascades;Prion diseases;Systemic lupus erythematosus;

## Image Data

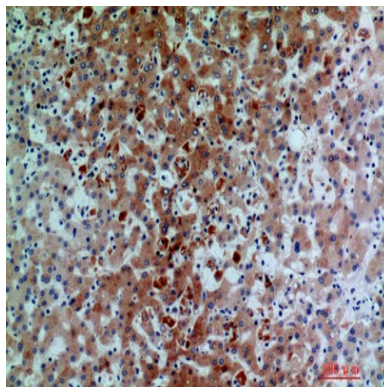


Western blot analysis of Hela lysis using C7 antibody. Antibody was diluted at 1:500. Secondary antibody was diluted at 1:20000



Immunohistochemical analysis of paraffin-embedded human-brain, antibody was diluted at 1:200

**Product Name: C7 Rabbit Polyclonal Antibody**  
**Catalog #: APRab07756**



Immunohistochemical analysis of paraffin-embedded human-liver, antibody was diluted at 1:200

**Note**

For research use only.