
Summary

Production Name	C3aR Rabbit Polyclonal Antibody
Description	Rabbit Polyclonal Antibody
Host	Rabbit
Application	IHC,IF,ELISA
Reactivity	Human,Rat,Mouse

Performance

Conjugation	Unconjugated
Modification	Unmodified
Isotype	IgG
Clonality	Polyclonal
Form	Liquid
Storage	Store at 4°C short term. Aliquot and store at -20°C long term. Avoid freeze/thaw cycles.
Buffer	Liquid in PBS containing 50% glycerol, 0.5% BSA and 0.02% New type preservative N.
Purification	Affinity purification

Immunogen

Gene Name	C3AR1
Alternative Names	C3AR1; AZ3B; C3R1; HNFAG09; C3a anaphylatoxin chemotactic receptor; C3AR; C3a-R
Gene ID	719.0
SwissProt ID	Q16581.The antiserum was produced against synthesized peptide derived from human C3AR1. AA range:175-224

Application

Dilution Ratio	IHC 1:100 - 1:300. IF 1:200 - 1:1000. ELISA: 1:10000. Not yet tested in other applications.
Molecular Weight	

Background

Product Name: C3aR Rabbit Polyclonal Antibody
Catalog #: APRab07746

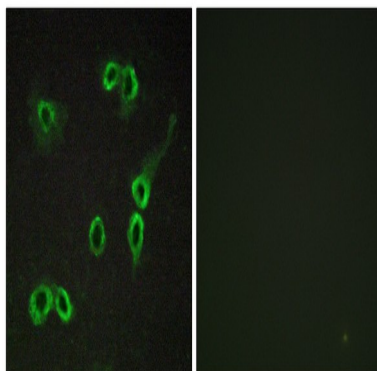


C3a is an anaphylatoxin released during activation of the complement system. The protein encoded by this gene is an orphan G protein-coupled receptor for C3a. Binding of C3a by the encoded receptor activates chemotaxis, granule enzyme release, superoxide anion production, and bacterial opsonization. [provided by RefSeq, May 2016],function:Receptor for the chemotactic and inflammatory peptide anaphylatoxin C3a. This receptor stimulates chemotaxis, granule enzyme release and superoxide anion production.,PTM:Among the sulfation sites Tyr-174 is essential for binding of C3a anaphylatoxin.,similarity:Belongs to the G-protein coupled receptor 1 family.,tissue specificity:Widely expressed in several differentiated hematopoietic cell lines, in the lung, spleen, ovary, placenta, small intestine, throughout the brain, heart, and endothelial cells. Mostly expressed in lymphoid tissues.,

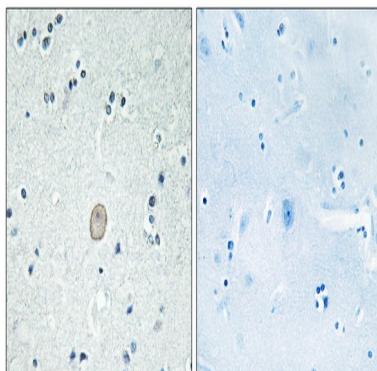
Research Area

Neuroactive ligand-receptor interaction;Complement and coagulation cascades;

Image Data



Immunofluorescence analysis of COS7 cells, using C3AR1 Antibody. The picture on the right is blocked with the synthesized peptide.



Immunohistochemistry analysis of paraffin-embedded human brain tissue, using C3AR1 Antibody. The picture on the right is blocked with the synthesized peptide.

Product Name: C3aR Rabbit Polyclonal Antibody
Catalog #: APRab07746



Note

For research use only.