

Product Name: C32 Rabbit Polyclonal Antibody
Catalog #: APRab07745



Summary

Production Name	C32 Rabbit Polyclonal Antibody
Description	Rabbit Polyclonal Antibody
Host	Rabbit
Application	WB
Reactivity	Human,Rat,Mouse

Performance

Conjugation	Unconjugated
Modification	Unmodified
Isotype	IgG
Clonality	Polyclonal
Form	Liquid
Storage	Store at 4°C short term. Aliquot and store at -20°C long term. Avoid freeze/thaw cycles.
Buffer	Liquid in PBS containing 50% glycerol, 0.5% BSA and 0.02% New type preservative N.
Purification	Affinity purification

Immunogen

Gene Name	CKLF
Alternative Names	CKLF; CKLF1; HSPC224; Chemokine-like factor; C32
Gene ID	51192.0
SwissProt ID	Q9UBR5.Synthesized peptide derived from Chemokine-like factor at AA range: 103-152

Application

Dilution Ratio	WB 1:500-1:2000. ELISA: 1:10000.
Molecular Weight	20kD

Background

The product of this gene is a cytokine. Cytokines are small proteins that have an essential role in the immune and inflammatory responses. This gene is one of several chemokine-like factor genes located in a cluster on chromosome 16.

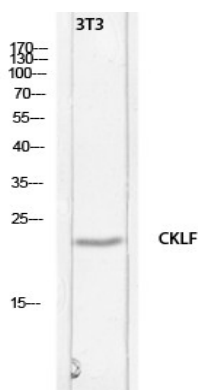
Product Name: C32 Rabbit Polyclonal Antibody
Catalog #: APRab07745



The protein encoded by this gene is a potent chemoattractant for neutrophils, monocytes and lymphocytes. It also can stimulate the proliferation of skeletal muscle cells. This protein may play important roles in inflammation and in the regeneration of skeletal muscle. Alternatively spliced transcript variants encoding different isoforms have been identified. Naturally occurring read-through transcription occurs between this locus and the neighboring locus CMTM1 (CKLF-like MARVEL transmembrane domain containing 1).[provided by RefSeq, Feb 2011],function:Isoform CKLF1 has chemotactic response in rat monocytes, neutrophils, and lymphocytes.,function:May play an important role in inflammation and regeneration of skeletal muscle. Partly inhibited by interleukin 10.,similarity:Belongs to the chemokine-like factor family.,similarity:Contains 1 MARVEL domain.,tissue specificity:All 4 isoforms have highest expression levels in adult spleen, lungs, testis, ovary, peripheral blood leucocyte, placenta, pancreas, and in fetal brain, skeletal muscle, thymus and heart. Lower expression levels in adult skeletal muscle, liver, thymus colon, prostate, and fetal spleen and liver.,

Research Area

Image Data



Western blot analysis of 3T3 lysis using CKLF antibody.. Secondary antibody was diluted at 1:20000

Note

For research use only.