

---

## Summary

<b>Production Name</b>	C1q-B Rabbit Polyclonal Antibody
<b>Description</b>	Rabbit Polyclonal Antibody
<b>Host</b>	Rabbit
<b>Application</b>	IF, WB,
<b>Reactivity</b>	Human, Rat, Mouse

## Performance

<b>Conjugation</b>	Unconjugated
<b>Modification</b>	Unmodified
<b>Isotype</b>	IgG
<b>Clonality</b>	Polyclonal
<b>Form</b>	Liquid
<b>Storage</b>	Store at 4°C short term. Aliquot and store at -20°C long term. Avoid freeze/thaw cycles.
<b>Buffer</b>	Liquid in PBS containing 50% glycerol, 0.5% BSA and 0.02% New type preservative N.
<b>Purification</b>	Affinity purification

## Immunogen

<b>Gene Name</b>	C1QB
<b>Alternative Names</b>	C1QB; Complement C1q subcomponent subunit B
<b>Gene ID</b>	713.0
<b>SwissProt ID</b>	P02746. The antiserum was produced against synthesized peptide derived from human C1QB. AA range: 161-210

## Application

<b>Dilution Ratio</b>	WB 1:500-2000; IF ICC 1:100-500; ELISA 1:5000-20000
<b>Molecular Weight</b>	28kD

## Background

---

**Product Name: C1q-B Rabbit Polyclonal Antibody**  
**Catalog #: APRab07722**

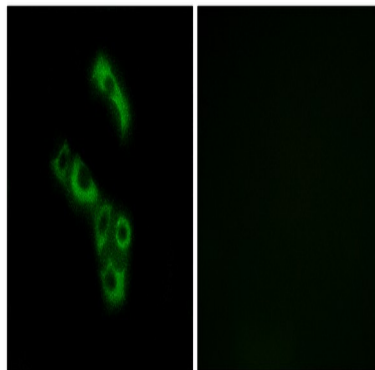


This gene encodes a major constituent of the human complement subcomponent C1q. C1q associates with C1r and C1s in order to yield the first component of the serum complement system. Deficiency of C1q has been associated with lupus erythematosus and glomerulonephritis. C1q is composed of 18 polypeptide chains: six A-chains, six B-chains, and six C-chains. Each chain contains a collagen-like region located near the N terminus and a C-terminal globular region. The A-, B-, and C-chains are arranged in the order A-C-B on chromosome 1. This gene encodes the B-chain polypeptide of human complement subcomponent C1q [provided by RefSeq, Jul 2008],disease:Defects in C1QB are a cause of C1q deficiency [MIM:120570]. It is a rare genetic disorder which is associated with recurrent infections and a high prevalence of lupus erythematosus-like symptoms. It is characterized by a loss of activation of the complement classical pathway.,function:C1q associates with the proenzymes C1r and C1s to yield C1, the first component of the serum complement system. The collagen-like regions of C1q interact with the Ca(2+)-dependent C1r(2)C1s(2) proenzyme complex, and efficient activation of C1 takes place on interaction of the globular heads of C1q with the Fc regions of IgG or IgM antibody present in immune complexes.,online information:C1QB mutation db,PTM:O-linked glycans consist of Glc-Gal disaccharides bound to the oxygen atom of post-translationally added hydroxyl groups.,similarity:Contains 1 C1q domain.,similarity:Contains 1 collagen-like domain.,subunit:C1 is a calcium-dependent trimolecular complex of C1q, c1r and C1s in the molar ration of 1:2:2. C1q subcomponent is composed of nine subunits, six of which are disulfide-linked dimers of the A and B chains, and three of which are disulfide-linked dimers of the C chain.,

## Research Area

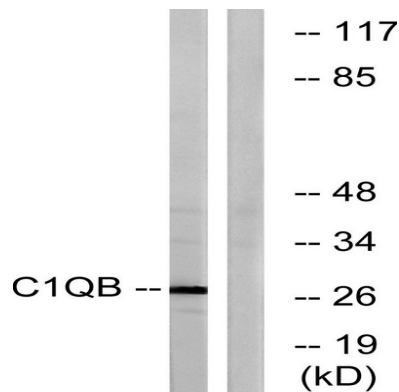
Complement and coagulation cascades;Prion diseases;Systemic lupus erythematosus;

## Image Data

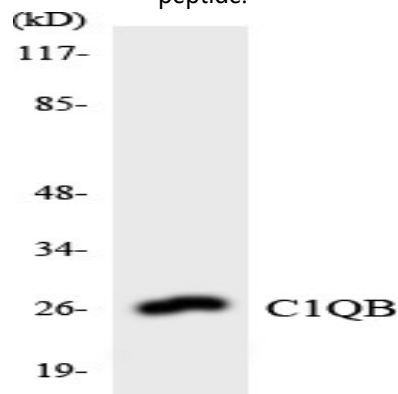


Immunofluorescence analysis of A549 cells, using C1QB Antibody. The picture on the right is blocked with the synthesized peptide.

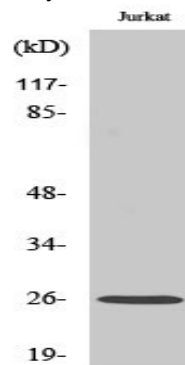
**Product Name: C1q-B Rabbit Polyclonal Antibody**  
**Catalog #: APRab07722**



Western blot analysis of lysates from Jurkat cells, using C1QB Antibody. The lane on the right is blocked with the synthesized peptide.



Western blot analysis of the lysates from Jurkat cells using C1QB antibody.



Western Blot analysis of various cells using C1q-B Polyclonal Antibody diluted at 1: 1000

## Note

For research use only.