

## Summary

<b>Production Name</b>	C/EBP $\beta$ Rabbit Polyclonal Antibody
<b>Description</b>	Rabbit Polyclonal Antibody
<b>Host</b>	Rabbit
<b>Application</b>	IF, WB, IHC, ELISA
<b>Reactivity</b>	Human, Mouse, Rat, Pig

## Performance

<b>Conjugation</b>	Unconjugated
<b>Modification</b>	Unmodified
<b>Isotype</b>	IgG
<b>Clonality</b>	Polyclonal
<b>Form</b>	Liquid
<b>Storage</b>	Store at 4°C short term. Aliquot and store at -20°C long term. Avoid freeze/thaw cycles.
<b>Buffer</b>	Liquid in PBS containing 50% glycerol, 0.5% BSA and 0.02% New type preservative N.
<b>Purification</b>	Affinity purification

## Immunogen

<b>Gene Name</b>	CEBPB
<b>Alternative Names</b>	CEBPB; LAP; TCF5; PP9092; CCAAT/enhancer-binding protein beta; C/EBP beta; Liver activator protein; Nuclear factor NF-IL6; Transcription factor 5; TCF-5
<b>Gene ID</b>	1051.0
<b>SwissProt ID</b>	P17676.The antiserum was produced against synthesized peptide derived from human C/EBP-beta. AA range:201-250

## Application

<b>Dilution Ratio</b>	IF 1:50-200 WB 1:500 - 1:2000. IHC 1:100 - 1:300. ELISA: 1:10000. Not yet tested in other applications.
<b>Molecular Weight</b>	36kD

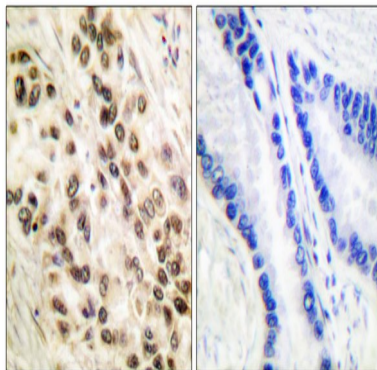
## Background

This intronless gene encodes a transcription factor that contains a basic leucine zipper (bZIP) domain. The encoded protein functions as a homodimer but can also form heterodimers with CCAAT/enhancer-binding proteins alpha, delta, and gamma. Activity of this protein is important in the regulation of genes involved in immune and inflammatory responses, among other processes. The use of alternative in-frame AUG start codons results in multiple protein isoforms, each with distinct biological functions. [provided by RefSeq, Oct 2013],function:Important transcriptional activator in the regulation of genes involved in immune and inflammatory responses. Specifically binds to an IL-1 response element in the IL-6 gene. NF-IL6 also binds to regulatory regions of several acute-phase and cytokines genes. It probably plays a role in the regulation of acute-phase reaction, inflammation and hemopoiesis. The consensus recognition site is 5'-T[**TG**]NNGNAA[**TG**]-3',.PTM:Sumoylated by polymeric chains of SUMO2 or SUMO3.,similarity:Belongs to the bZIP family.,similarity:Belongs to the bZIP family. C/EBP subfamily.,similarity:Contains 1 bZIP domain.,subunit:Binds DNA as a dimer and can form stable heterodimers with C/EBP alpha, delta and gamma. Interacts with TRIM28 and PTGES2.,tissue specificity:Expressed at low levels in the lung, kidney and spleen.,

## Research Area

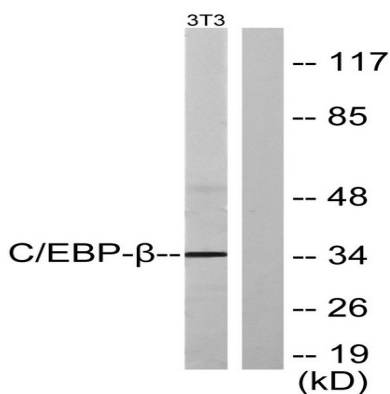
Stem cell pathway; Protein\_Acetylation

## Image Data

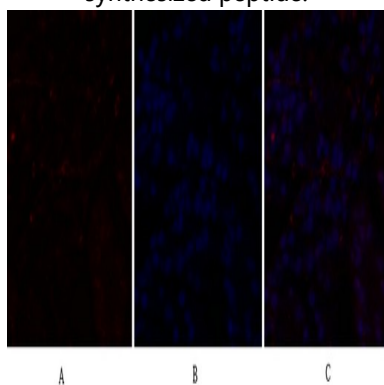


Immunohistochemistry analysis of paraffin-embedded human lung carcinoma tissue, using C/EBP-beta Antibody. The picture on the right is blocked with the synthesized peptide.

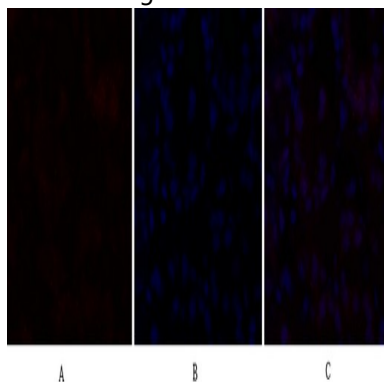
**Product Name: C/EBP  $\beta$  Rabbit Polyclonal Antibody**  
**Catalog #: APRab07706**



Western blot analysis of lysates from NIH/3T3 cells, using C/EBP-beta Antibody. The lane on the right is blocked with the synthesized peptide.

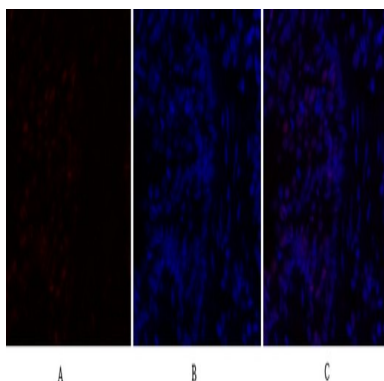


Immunofluorescence analysis of human-stomach tissue. 1, C/EBP  $\beta$  Polyclonal Antibody (red) was diluted at 1:200 (4°C, overnight). 2, Cy3 labeled Secondary antibody was diluted at 1:300 (room temperature, 50min). 3, Picture B: DAPI (blue) 10min. Picture A: Target. Picture B: DAPI. Picture C: merge of A+B



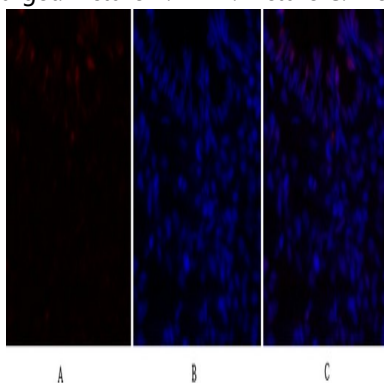
Immunofluorescence analysis of human-stomach tissue. 1, C/EBP  $\beta$  Polyclonal Antibody (red) was diluted at 1:200 (4°C, overnight). 2, Cy3 labeled Secondary antibody was diluted at 1:300 (room temperature, 50min). 3, Picture B: DAPI (blue) 10min. Picture A: Target. Picture B: DAPI. Picture C: merge of A+B

**Product Name: C/EBP  $\beta$  Rabbit Polyclonal Antibody**  
**Catalog #: APRab07706**



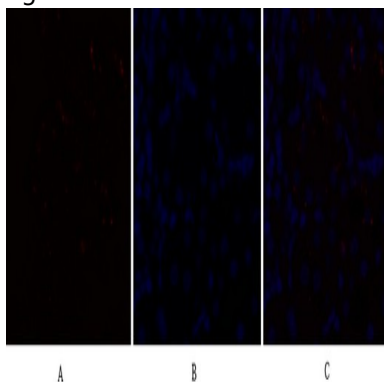
Immunofluorescence analysis of rat-lung tissue. 1,C/EBP  $\beta$  Polyclonal Antibody (red) was diluted at 1:200 (4°C,overnight) .  
2, Cy3 labeled Secondary antibody was diluted at 1:300 (room temperature, 50min) .3, Picture B: DAPI (blue) 10min.

Picture A:Target. Picture B: DAPI. Picture C: merge of A+B



Immunofluorescence analysis of rat-lung tissue. 1,C/EBP  $\beta$  Polyclonal Antibody (red) was diluted at 1:200 (4°C,overnight) .  
2, Cy3 labeled Secondary antibody was diluted at 1:300 (room temperature, 50min) .3, Picture B: DAPI (blue) 10min.

Picture A:Target. Picture B: DAPI. Picture C: merge of A+B

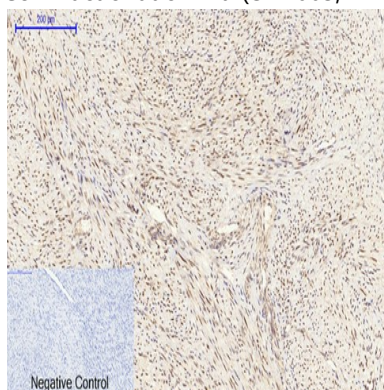


Immunofluorescence analysis of rat-kidney tissue. 1,C/EBP  $\beta$  Polyclonal Antibody (red) was diluted at  
1:200 (4°C,overnight) . 2, Cy3 labeled Secondary antibody was diluted at 1:300 (room temperature, 50min) .3, Picture B:  
DAPI (blue) 10min. Picture A:Target. Picture B: DAPI. Picture C: merge of A+B

**Product Name: C/EBP  $\beta$  Rabbit Polyclonal Antibody**  
**Catalog #: APRab07706**



Western Blot analysis of various cells using primary antibody diluted at 1:1000 (4°C overnight) . Secondary antibody: Goat Anti-rabbit IgG IRDye 800 ( diluted at 1:5000, 25°C, 1 hour) . Cell lysate was extracted by Minute™ Plasma Membrane Protein Isolation and Cell Fractionation Kit (SM-005, Inventbiotech,MN,USA) .



Immunohistochemical analysis of paraffin-embedded Human-uterus-cancer tissue. 1,C/EBP  $\beta$  Polyclonal Antibody was diluted at 1:200 (4°C,overnight) . 2, Sodium citrate pH 6.0 was used for antibody retrieval (>98°C,20min) . 3,Secondary antibody was diluted at 1:200 (room temperature, 30min) . Negative control was used by secondary antibody only.

## Note

For research use only.