

Summary

Production Name	BSX Rabbit Polyclonal Antibody
Description	Rabbit Polyclonal Antibody
Host	Rabbit
Application	WB
Reactivity	Human,Mouse,Rat

Performance

Conjugation	Unconjugated
Modification	Unmodified
Isotype	IgG
Clonality	Polyclonal
Form	Liquid
Storage	Store at 4°C short term. Aliquot and store at -20°C long term. Avoid freeze/thaw cycles.
Buffer	Liquid in PBS containing 50% glycerol, 0.5% BSA and 0.02% New type preservative N.
Purification	Affinity purification

Immunogen

Gene Name	BSX
Alternative Names	BSX; BSX1; Brain-specific homeobox protein homolog
Gene ID	390259.0
SwissProt ID	Q3C1V8.Synthesized peptide derived from BSX . at AA range: 150-230

Application

Dilution Ratio	WB 1:500-1:2000. ELISA: 1:5000.
Molecular Weight	26kD

Background

function:DNA binding protein that function as transcriptional activator. Is essential for normal postnatal growth and nursing. Is an essential factor for neuronal neuropeptide Y and agouti-related peptide function and locomotory behavior in

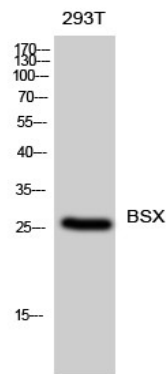
Product Name: BSX Rabbit Polyclonal Antibody
Catalog #: APRab07677



the control of energy balance.,online information:Of fidgets and food -Issue 85 of August 2007,similarity:Belongs to the distal-less homeobox family.,similarity:Contains 1 homeobox DNA-binding domain.,function:DNA binding protein that function as transcriptional activator. Is essential for normal postnatal growth and nursing. Is an essential factor for neuronal neuropeptide Y and agouti-related peptide function and locomotory behavior in the control of energy balance.,online information:Of fidgets and food -Issue 85 of August 2007,similarity:Belongs to the distal-less homeobox family.,similarity:Contains 1 homeobox DNA-binding domain.,

Research Area

Image Data



Western Blot analysis of 293T cells using BSX Polyclonal Antibody diluted at 1 : 500

Note

For research use only.