
Summary

Production Name	BST-2 Rabbit Polyclonal Antibody
Description	Rabbit Polyclonal Antibody
Host	Rabbit
Application	WB,IHC,ELISA
Reactivity	Human,Rat,Mouse

Performance

Conjugation	Unconjugated
Modification	Unmodified
Isotype	IgG
Clonality	Polyclonal
Form	Liquid
Storage	Store at 4°C short term. Aliquot and store at -20°C long term. Avoid freeze/thaw cycles.
Buffer	Liquid in PBS containing 50% glycerol, 0.5% BSA and 0.02% New type preservative N.
Purification	Affinity purification

Immunogen

Gene Name	BST2
Alternative Names	BST2; Bone marrow stromal antigen 2; BST-2; HM1.24 antigen; Tetherin; CD317
Gene ID	684.0
SwissProt ID	Q10589.The antiserum was produced against synthesized peptide derived from the Internal region of human BST2. AA range:101-150

Application

Dilution Ratio	WB 1:500 - 1:2000. IHC-p: 1:100-1:300. ELISA: 1:10000..
Molecular Weight	20kD

Background

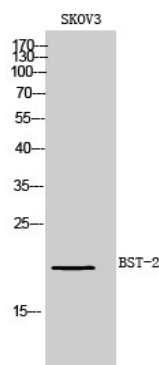
Product Name: BST-2 Rabbit Polyclonal Antibody
Catalog #: APRab07676



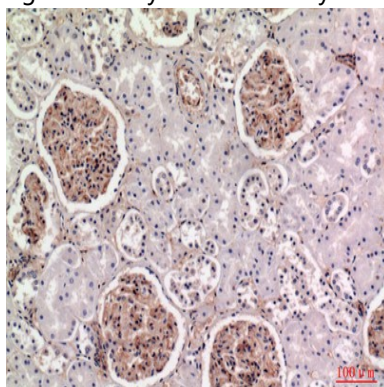
Bone marrow stromal cells are involved in the growth and development of B-cells. The specific function of the protein encoded by the bone marrow stromal cell antigen 2 is undetermined; however, this protein may play a role in pre-B-cell growth and in rheumatoid arthritis. [provided by RefSeq, Jul 2008],disease:May play a role in B-cell activation in rheumatoid arthritis (RA),function:May be involved in the sorting of secreted proteins (By similarity). May be involved in pre-B-cell growth. Antiretroviral defense protein, that blocks release of retrovirus from the cell surface. Depleted upon HIV-1 infection by viral VPU protein through 20S proteasome degradation.,induction:During B-cell activation (at protein level), or by interferon alpha as part of antiviral state cellular program.,subunit:Homodimer.,tissue specificity:Predominantly expressed in liver, lung, heart and placenta. Lower levels in pancreas, kidney, skeletal muscle and brain. Overexpressed in multiple myeloma cells. Highly expressed during B-cell development, from pro-B precursors to plasma cells. Highly expressed on T-cells, monocytes, NK cells and dendritic cells (at protein level),.

Research Area

Image Data



Western Blot analysis of SKOV3 cells using BST-2 Polyclonal Antibody.. Secondary antibody was diluted at 1:20000



Immunohistochemical analysis of paraffin-embedded human-kidney, antibody was diluted at 1:100

Product Name: BST-2 Rabbit Polyclonal Antibody
Catalog #: APRab07676



Note

For research use only.