

## Summary

<b>Production Name</b>	BRS-3 Rabbit Polyclonal Antibody
<b>Description</b>	Rabbit Polyclonal Antibody
<b>Host</b>	Rabbit
<b>Application</b>	WB
<b>Reactivity</b>	Human,Rat,Mouse

## Performance

<b>Conjugation</b>	Unconjugated
<b>Modification</b>	Unmodified
<b>Isotype</b>	IgG
<b>Clonality</b>	Polyclonal
<b>Form</b>	Liquid
<b>Storage</b>	Store at 4°C short term. Aliquot and store at -20°C long term. Avoid freeze/thaw cycles.
<b>Buffer</b>	Liquid in PBS containing 50% glycerol, 0.5% BSA and 0.02% New type preservative N.
<b>Purification</b>	Affinity purification

## Immunogen

<b>Gene Name</b>	BRS3
<b>Alternative Names</b>	BRS3; Bombesin receptor subtype-3; BRS-3
<b>Gene ID</b>	680.0
<b>SwissProt ID</b>	P32247.The antiserum was produced against synthesized peptide derived from human BRS3. AA range:161-210

## Application

<b>Dilution Ratio</b>	WB 1:500-1:2000. ELISA: 1:10000.
<b>Molecular Weight</b>	47kD

## Background

The protein encoded by this gene is a G protein-coupled membrane receptor that binds bombesin-like peptides. This

**Product Name: BRS-3 Rabbit Polyclonal Antibody**  
**Catalog #: APRab07667**

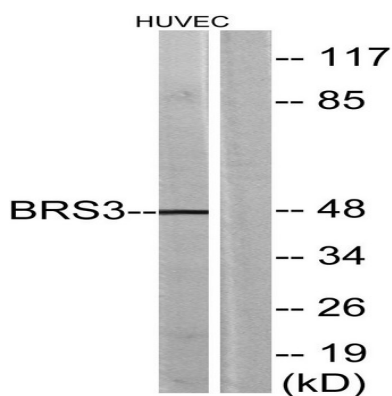


binding results in activation of a phosphatidylinositol-calcium second messenger system, with physiological effects including regulation of metabolic rate, glucose metabolism, and hypertension. [provided by RefSeq, Sep 2011],function:Role in sperm cell division, maturation, or function. This receptor mediates its action by association with G proteins that activate a phosphatidylinositol-calcium second messenger system.,similarity:Belongs to the G-protein coupled receptor 1 family.,tissue specificity:In germ cells in testis. Lung carcinoma cells.,

## Research Area

Neuroactive ligand-receptor interaction;

## Image Data



Western blot analysis of lysates from HUVEC cells, using BRS3 Antibody. The lane on the right is blocked with the synthesized peptide.

## Note

For research use only.