
Summary

Production Name	BRS-3 Rabbit Polyclonal Antibody
Description	Rabbit Polyclonal Antibody
Host	Rabbit
Application	IF,WB,ELISA
Reactivity	Human,Rat,Mouse

Performance

Conjugation	Unconjugated
Modification	Unmodified
Isotype	IgG
Clonality	Polyclonal
Form	Liquid
Storage	Store at 4°C short term. Aliquot and store at -20°C long term. Avoid freeze/thaw cycles.
Buffer	Liquid in PBS containing 50% glycerol, 0.5% BSA and 0.02% New type preservative N.
Purification	Affinity purification

Immunogen

Gene Name	BRS3
Alternative Names	BRS3; Bombesin receptor subtype-3; BRS-3
Gene ID	680.0
SwissProt ID	P32247.The antiserum was produced against synthesized peptide derived from human BRS3. AA range:161-210

Application

Dilution Ratio	WB 1:500 - 1:2000. IF 1:200 - 1:1000. ELISA: 1:40000. Not yet tested in other applications.
Molecular Weight	44kD

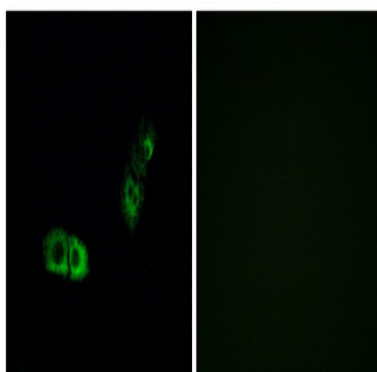
Background

The protein encoded by this gene is a G protein-coupled membrane receptor that binds bombesin-like peptides. This binding results in activation of a phosphatidylinositol-calcium second messenger system, with physiological effects including regulation of metabolic rate, glucose metabolism, and hypertension. [provided by RefSeq, Sep 2011],function:Role in sperm cell division, maturation, or function. This receptor mediates its action by association with G proteins that activate a phosphatidylinositol-calcium second messenger system.,similarity:Belongs to the G-protein coupled receptor 1 family.,tissue specificity:In germ cells in testis. Lung carcinoma cells,.

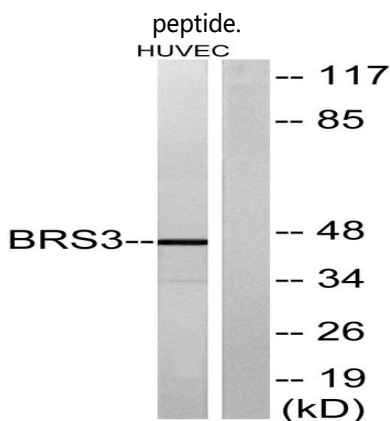
Research Area

Neuroactive ligand-receptor interaction;

Image Data

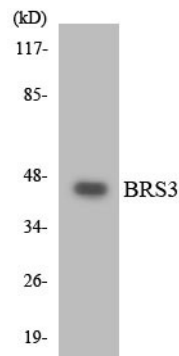


Immunofluorescence analysis of A549 cells, using BRS3 Antibody. The picture on the right is blocked with the synthesized

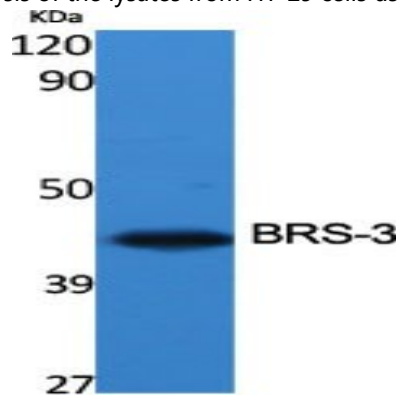


Western blot analysis of lysates from HUVEC cells, using BRS3 Antibody. The lane on the right is blocked with the synthesized peptide.

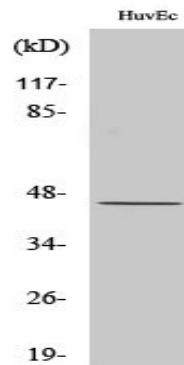
Product Name: BRS-3 Rabbit Polyclonal Antibody
Catalog #: APRab07666



Western blot analysis of the lysates from HT-29 cells using BRS3 antibody.



Western Blot analysis of various cells using BRS-3 Polyclonal Antibody



Western Blot analysis of HuvEc cells using BRS-3 Polyclonal Antibody

Note

For research use only.