

Summary

Production Name	Brp44 Rabbit Polyclonal Antibody
Description	Rabbit Polyclonal Antibody
Host	Rabbit
Application	IHC,ELISA
Reactivity	Human,Mouse,Rat

Performance

Conjugation	Unconjugated
Modification	Unmodified
Isotype	IgG
Clonality	Polyclonal
Form	Liquid
Storage	Store at 4°C short term. Aliquot and store at -20°C long term. Avoid freeze/thaw cycles.
Buffer	Liquid in PBS containing 50% glycerol, 0.5% BSA and 0.02% New type preservative N.
Purification	Affinity purification

Immunogen

Gene Name	MPC2
Alternative Names	MPC2; BRP44; Mitochondrial pyruvate carrier 2; Brain protein 44
Gene ID	25874.0
SwissProt ID	O95563.The antiserum was produced against synthesized peptide derived from human BRP44. AA range:31-80

Application

Dilution Ratio	IHC 1:100-1:300 ELISA: 1:40000
Molecular Weight	

Background

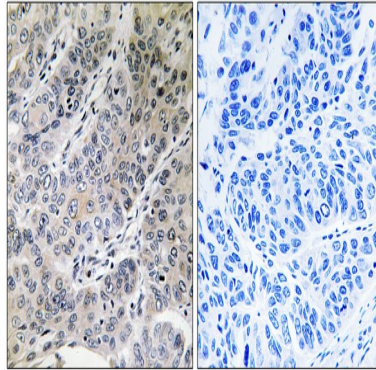
similarity:Belongs to the UPF0041 (0-44) family.,similarity:Belongs to the UPF0041 (0-44) family.,

Product Name: Brp44 Rabbit Polyclonal Antibody
Catalog #: APRab07664



Research Area

Image Data



Immunohistochemistry analysis of paraffin-embedded human lung carcinoma tissue, using BRP44 Antibody. The picture on the right is blocked with the synthesized peptide.

Note

For research use only.