

Product Name: Bradykinin B1 R Rabbit Polyclonal Antibody
Catalog #: APRab07638

Summary

Production Name	Bradykinin B1 R Rabbit Polyclonal Antibody
Description	Rabbit Polyclonal Antibody
Host	Rabbit
Application	WB,IF,ELISA
Reactivity	Human,Rat,Mouse

Performance

Conjugation	Unconjugated
Modification	Unmodified
Isotype	IgG
Clonality	Polyclonal
Form	Liquid
Storage	Store at 4°C short term. Aliquot and store at -20°C long term. Avoid freeze/thaw cycles.
Buffer	Liquid in PBS containing 50% glycerol, 0.5% BSA and 0.02% New type preservative N.
Purification	Affinity purification

Immunogen

Gene Name	BDKRB1
Alternative Names	BDKRB1; BRADYB1; B1 bradykinin receptor; B1R; BK-1 receptor
Gene ID	623.0
SwissProt ID	P46663.The antiserum was produced against synthesized peptide derived from human BDKRB1. AA range:201-250

Application

Dilution Ratio	WB 1:500 - 1:2000. IF 1:200 - 1:1000. ELISA: 1:5000. Not yet tested in other applications.
Molecular Weight	40kD

Product Name: Bradykinin B1 R Rabbit Polyclonal Antibody
Catalog #: APRab07638

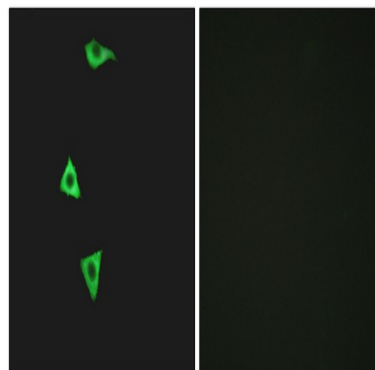
Background

Bradykinin, a 9 aa peptide, is generated in pathophysiologic conditions such as inflammation, trauma, burns, shock, and allergy. Two types of G-protein coupled receptors have been found which bind bradykinin and mediate responses to these pathophysiologic conditions. The protein encoded by this gene is one of these receptors and is synthesized de novo following tissue injury. Receptor binding leads to an increase in the cytosolic calcium ion concentration, ultimately resulting in chronic and acute inflammatory responses. Several transcript variants encoding different isoforms have been found for this gene. [provided by RefSeq, Sep 2011],function:This is a receptor for bradykinin. Could be a factor in chronic pain and inflammation.,online information:Bradykinin receptor entry,similarity:Belongs to the G-protein coupled receptor 1 family.,

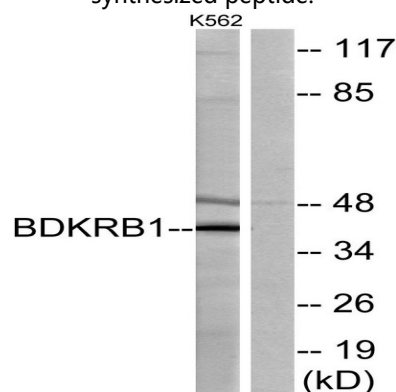
Research Area

Calcium;Neuroactive ligand-receptor interaction;Complement and coagulation cascades;Regulates Actin and Cytoskeleton;

Image Data



Immunofluorescence analysis of LOVO cells, using BDKRB1 Antibody. The picture on the right is blocked with the synthesized peptide.



Western blot analysis of lysates from K562 cells, using BDKRB1 Antibody. The lane on the right is blocked with the synthesized peptide.

**Product Name: Bradykinin B1 R Rabbit Polyclonal
Antibody**
Catalog #: APRab07638



Note

For research use only.