
Summary

Production Name	BMP-8A Rabbit Polyclonal Antibody
Description	Rabbit Polyclonal Antibody
Host	Rabbit
Application	IF, WB, IHC, ELISA
Reactivity	Human, Rat, Mouse

Performance

Conjugation	Unconjugated
Modification	Unmodified
Isotype	IgG
Clonality	Polyclonal
Form	Liquid
Storage	Store at 4°C short term. Aliquot and store at -20°C long term. Avoid freeze/thaw cycles.
Buffer	Liquid in PBS containing 50% glycerol, 0.5% BSA and 0.02% New type preservative N.
Purification	Affinity purification

Immunogen

Gene Name	BMP8A
Alternative Names	BMP8A; Bone morphogenetic protein 8A; BMP-8A
Gene ID	353500.0
SwissProt ID	Q7Z5Y6. The antiserum was produced against synthesized peptide derived from human BMP8A. AA range: 253-302

Application

Dilution Ratio	WB 1:500 - 1:2000. IHC 1:100 - 1:300. IF 1:200 - 1:1000. ELISA: 1:20000. Not yet tested in other applications.
Molecular Weight	45-55kD

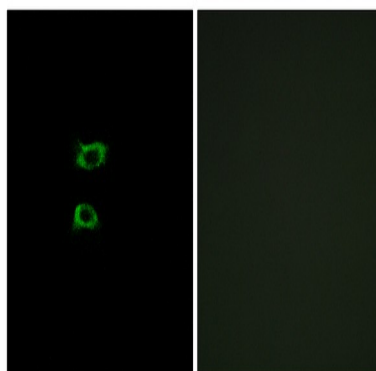
Background

This gene encodes a secreted ligand of the TGF-beta (transforming growth factor-beta) superfamily of proteins. Ligands of this family bind various TGF-beta receptors leading to recruitment and activation of SMAD family transcription factors that regulate gene expression. The encoded preproprotein is proteolytically processed to generate each subunit of the disulfide-linked homodimer. This protein may play a role in development of the reproductive system. This gene may have arose from a gene duplication event and its gene duplicate is also present on chromosome 1. [provided by RefSeq, Jul 2016],function:Induces cartilage and bone formation. May be the osteoinductive factor responsible for the phenomenon of epithelial osteogenesis. Plays a role in calcium regulation and bone homeostasis.,online information:Bone morphogenetic protein 8A entry,similarity:Belongs to the TGF-beta family.,subunit:Homodimer; disulfide-linked.,

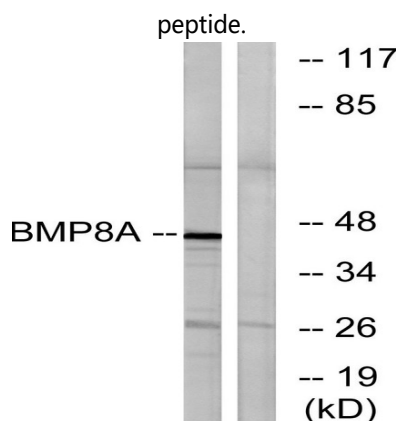
Research Area

Hedgehog;TGF-beta;

Image Data

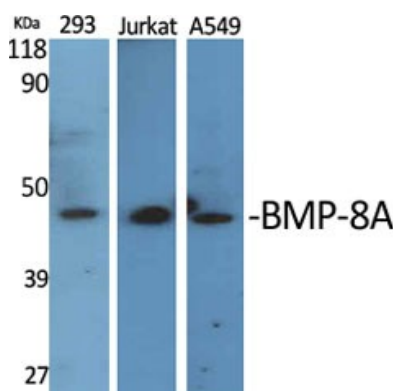


Immunofluorescence analysis of A549 cells, using BMP8A Antibody. The picture on the right is blocked with the synthesized

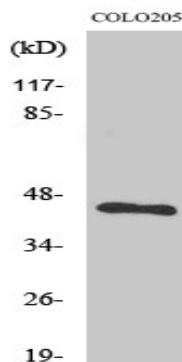


Western blot analysis of lysates from COLO cells, using BMP8A Antibody. The lane on the right is blocked with the synthesized peptide.

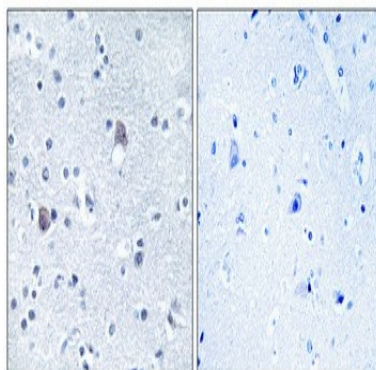
Product Name: BMP-8A Rabbit Polyclonal Antibody
Catalog #: APRab07604



Western Blot analysis of various cells using BMP-8A Polyclonal Antibody



Western Blot analysis of COLO205 cells using BMP-8A Polyclonal Antibody



Immunohistochemical analysis of paraffin-embedded Human brain. Antibody was diluted at 1:100 (4°, overnight) . High-pressure and temperature Tris-EDTA, pH8.0 was used for antigen retrieval. Negative control (right) obtained from antibody was pre-absorbed by immunogen peptide.

Note

For research use only.