

Summary

Production Name	BMP-6 Rabbit Polyclonal Antibody
Description	Rabbit Polyclonal Antibody
Host	Rabbit
Application	WB
Reactivity	Human,Mouse,Rat

Performance

Conjugation	Unconjugated
Modification	Unmodified
Isotype	IgG
Clonality	Polyclonal
Form	Liquid
Storage	Store at 4°C short term. Aliquot and store at -20°C long term. Avoid freeze/thaw cycles.
Buffer	Liquid in PBS containing 50% glycerol, 0.5% BSA and 0.02% New type preservative N.
Purification	Affinity purification

Immunogen

Gene Name	BMP6
Alternative Names	BMP6; VGR; Bone morphogenetic protein 6; BMP-6; VG-1-related protein; VG-1-R; VGR-1
Gene ID	654.0
SwissProt ID	P22004.The antiserum was produced against synthesized peptide derived from the Internal region of human BMP6. AA range:341-390

Application

Dilution Ratio	WB 1:500-1:2000. ELISA: 1:10000.
Molecular Weight	60kD

Background

Product Name: BMP-6 Rabbit Polyclonal Antibody
Catalog #: APRab07600

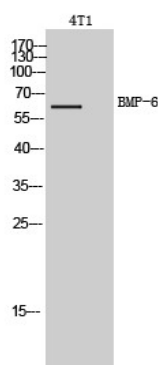


This gene encodes a secreted ligand of the TGF-beta (transforming growth factor-beta) superfamily of proteins. Ligands of this family bind various TGF-beta receptors leading to recruitment and activation of SMAD family transcription factors that regulate gene expression. The encoded preproprotein is proteolytically processed to generate each subunit of the disulfide-linked homodimer. This protein regulates a wide range of biological processes including iron homeostasis, fat and bone development, and ovulation. Differential expression of this gene may be associated with progression of breast and prostate cancer. Mutations in this gene may be associated with iron overload in human patients. [provided by RefSeq, Jul 2016],function:Induces cartilage and bone formation.,online information:Bone morphogenetic protein 6 entry,similarity:Belongs to the TGF-beta family.,subunit:Interacts with SOSTDC1.,

Research Area

Hedgehog;TGF-beta;

Image Data



Western Blot analysis of 4T1 cells using BMP-6 Polyclonal Antibody.. Secondary antibody was diluted at 1:20000

Note

For research use only.