

---

## Summary

<b>Production Name</b>	BMP-5 Rabbit Polyclonal Antibody
<b>Description</b>	Rabbit Polyclonal Antibody
<b>Host</b>	Rabbit
<b>Application</b>	IHC, WB,
<b>Reactivity</b>	Human, Mouse

## Performance

<b>Conjugation</b>	Unconjugated
<b>Modification</b>	Unmodified
<b>Isotype</b>	IgG
<b>Clonality</b>	Polyclonal
<b>Form</b>	Liquid
<b>Storage</b>	Store at 4°C short term. Aliquot and store at -20°C long term. Avoid freeze/thaw cycles.
<b>Buffer</b>	Liquid in PBS containing 50% glycerol, 0.5% BSA and 0.02% New type preservative N.
<b>Purification</b>	Affinity purification

## Immunogen

<b>Gene Name</b>	BMP5
<b>Alternative Names</b>	BMP5; Bone morphogenetic protein 5; BMP-5
<b>Gene ID</b>	653.0
<b>SwissProt ID</b>	P22003. The antiserum was produced against synthesized peptide derived from human BMP-5. AA range: 114-163

## Application

<b>Dilution Ratio</b>	WB 1:500 - 1:2000. IHC 1:100 - 1:300. ELISA: 1:40000..
<b>Molecular Weight</b>	52kD

## Background

---

**Product Name: BMP-5 Rabbit Polyclonal Antibody**  
**Catalog #: APRab07599**

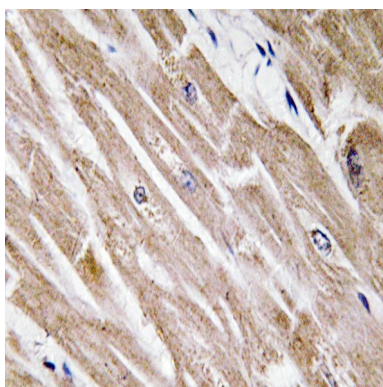


This gene encodes a secreted ligand of the TGF-beta (transforming growth factor-beta) superfamily of proteins. Ligands of this family bind various TGF-beta receptors leading to recruitment and activation of SMAD family transcription factors that regulate gene expression. The encoded preproprotein is proteolytically processed to generate each subunit of the disulfide-linked homodimer, which plays a role in bone and cartilage development. Polymorphisms in this gene may be associated with osteoarthritis in human patients. This gene is differentially regulated in multiple human cancers. This gene encodes distinct protein isoforms that may be similarly proteolytically processed. [provided by RefSeq, Jul 2016],function:Induces cartilage and bone formation.,online information:Bone morphogenetic protein 5 entry,similarity:Belongs to the TGF-beta family.,subunit:Homodimer; disulfide-linked.,tissue specificity:Expressed in the lung and liver.,

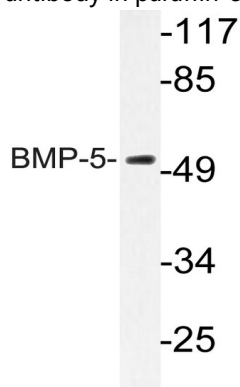
### Research Area

Hedgehog;TGF-beta;

### Image Data

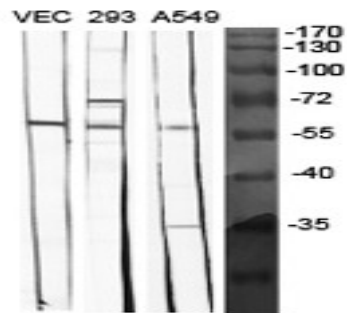


Immunohistochemistry analysis of BMP-5 antibody in paraffin-embedded human heart tissue.

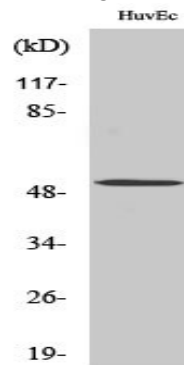


Western blot analysis of lysate from HUVEC cells, using BMP-5 antibody.

**Product Name: BMP-5 Rabbit Polyclonal Antibody**  
**Catalog #: APRab07599**



Western Blot analysis of various cells using BMP-5 Polyclonal Antibody diluted at 1: 1000



Western Blot analysis of HeLa cells using BMP-5 Polyclonal Antibody diluted at 1: 1000

## **Note**

For research use only.