

Summary

Production Name	BET5 Rabbit Polyclonal Antibody
Description	Rabbit Polyclonal Antibody
Host	Rabbit
Application	IHC,ELISA
Reactivity	Human,Mouse,Rat

Performance

Conjugation	Unconjugated
Modification	Unmodified
Isotype	IgG
Clonality	Polyclonal
Form	Liquid
Storage	Store at 4°C short term. Aliquot and store at -20°C long term. Avoid freeze/thaw cycles.
Buffer	Liquid in PBS containing 50% glycerol, 0.5% BSA and 0.02% New type preservative N.
Purification	Affinity purification

Immunogen

Gene Name	TRAPPC1
Alternative Names	TRAPPC1; BET5; MUM2; Trafficking protein particle complex subunit 1; BET5 homolog; Multiple myeloma protein 2; MUM-2
Gene ID	58485.0
SwissProt ID	Q9Y5R8.The antiserum was produced against synthesized peptide derived from human TRAPPC1. AA range:10-59

Application

Dilution Ratio	IHC 1:100-1:300 ELISA: 1:5000
Molecular Weight	

Background

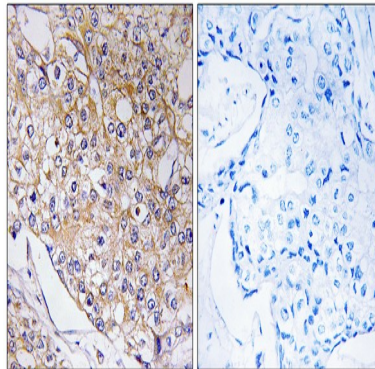
Product Name: BET5 Rabbit Polyclonal Antibody
Catalog #: APRab07536



trafficking protein particle complex 1 (TRAPPC1) Homo sapiens This gene product plays a role in vesicular transport of proteins to the Golgi apparatus from the endoplasmic reticulum. The encoded protein is a component of the multisubunit transport protein particle (TRAPP) complex. Alternative splicing results in multiple transcript variants.[provided by RefSeq, Oct 2009],function:May play a role in vesicular transport from endoplasmic reticulum to Golgi.,similarity:Belongs to the TRAPP small subunits family. BET5 subfamily.,subunit:Part of the multisubunit TRAPP (transport protein particle) complex.,

Research Area

Image Data



Immunohistochemistry analysis of paraffin-embedded human breast carcinoma tissue, using TRAPPC1 Antibody. The picture on the right is blocked with the synthesized peptide.

Note

For research use only.