
Summary

| | |
|------------------------|----------------------------------|
| Production Name | BCAS4 Rabbit Polyclonal Antibody |
| Description | Rabbit Polyclonal Antibody |
| Host | Rabbit |
| Application | WB,IHC,ELISA |
| Reactivity | Human,Rat,Mouse |

Performance

| | |
|---------------------|--|
| Conjugation | Unconjugated |
| Modification | Unmodified |
| Isotype | IgG |
| Clonality | Polyclonal |
| Form | Liquid |
| Storage | Store at 4°C short term. Aliquot and store at -20°C long term. Avoid freeze/thaw cycles. |
| Buffer | Liquid in PBS containing 50% glycerol, 0.5% BSA and 0.02% New type preservative N. |
| Purification | Affinity purification |

Immunogen

| | |
|--------------------------|--|
| Gene Name | BCAS4 |
| Alternative Names | BCAS4; Breast carcinoma-amplified sequence 4 |
| Gene ID | 55653.0 |
| SwissProt ID | Q8TDM0.The antiserum was produced against synthesized peptide derived from human BCAS4. AA range:31-80 |

Application

| | |
|-------------------------|--|
| Dilution Ratio | WB 1:500 - 1:2000. IHC 1:100 - 1:300. ELISA: 1:20000.. |
| Molecular Weight | 23kD |

Background

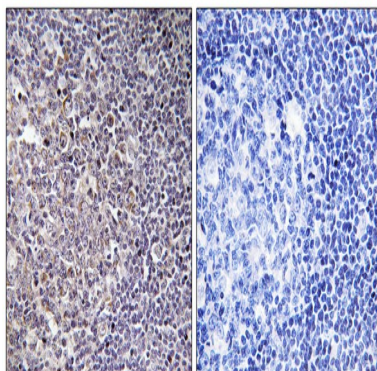
Product Name: BCAS4 Rabbit Polyclonal Antibody
Catalog #: APRab07490



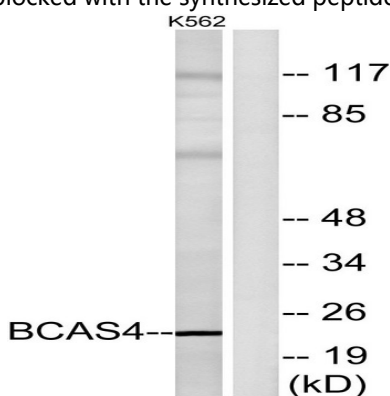
disease:A chromosomal aberration involving BCAS4 may be a cause of breast cancer. Translocation t(17;20)(q23;q13) with BCAS3.,similarity:Belongs to the cappuccino family.,tissue specificity:Brain, thymus, spleen, kidney and placenta. Overexpressed in most breast cancer cell lines.,disease:A chromosomal aberration involving BCAS4 may be a cause of breast cancer. Translocation t(17;20)(q23;q13) with BCAS3.,similarity:Belongs to the cappuccino family.,tissue specificity:Brain, thymus, spleen, kidney and placenta. Overexpressed in most breast cancer cell lines.,

Research Area

Image Data



Immunohistochemistry analysis of paraffin-embedded human tonsil tissue, using BCAS4 Antibody. The picture on the right is blocked with the synthesized peptide.



Western blot analysis of lysates from K562 cells, using BCAS4 Antibody. The lane on the right is blocked with the synthesized peptide.

Note

For research use only.