

Summary

Production Name	BAF250b Rabbit Polyclonal Antibody
Description	Rabbit Polyclonal Antibody
Host	Rabbit
Application	IF, WB, IHC
Reactivity	Human, Rat

Performance

Conjugation	Unconjugated
Modification	Unmodified
Isotype	IgG
Clonality	Polyclonal
Form	Liquid
Storage	Store at 4°C short term. Aliquot and store at -20°C long term. Avoid freeze/thaw cycles.
Buffer	Liquid in PBS containing 50% glycerol, 0.5% BSA and 0.02% New type preservative N.
Purification	Affinity purification

Immunogen

Gene Name	ARID1B
Alternative Names	ARID1B; BAF250B; DAN15; KIAA1235; OSA2; AT-rich interactive domain-containing protein 1B; ARID domain-containing protein 1B; BRG1-associated factor 250b; BAF250B; BRG1-binding protein hELD/OSA1; Osa homolog 2; hOsa2; p250R
Gene ID	57492.0
SwissProt ID	Q8NFD5. The antiserum was produced against synthesized peptide derived from human BAF250B. AA range:1371-1420

Application

Dilution Ratio	WB 1:500 - 1:2000. IHC 1:100 - 1:300. IF 1:200 - 1:1000. ELISA: 1:10000. Not yet tested in other applications.
-----------------------	--

Molecular Weight 170kD

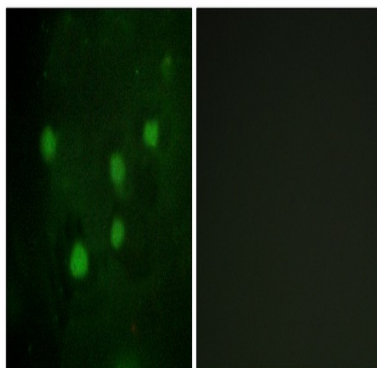
Background

This locus encodes an AT-rich DNA interacting domain-containing protein. The encoded protein is a component of the SWI/SNF chromatin remodeling complex and may play a role in cell-cycle activation. The protein encoded by this locus is similar to AT-rich interactive domain-containing protein 1A. These two proteins function as alternative, mutually exclusive ARID-subunits of the SWI/SNF complex. The associated complexes play opposing roles. Alternatively spliced transcript variants encoding different isoforms have been described. [provided by RefSeq, Feb 2012],caution:It is uncertain whether Met-1 or Met-59 is the initiator.,function:Involved in transcriptional activation and repression of select genes by chromatin remodeling (alteration of DNA-nucleosome topology). Binds DNA non-specifically.,similarity:Contains 1 ARID domain.,subunit:Component of SWI/SNF chromatin remodeling complexes, in some of which it can be mutually exclusive with ARID1A/BAF250A. Component of the BAF (SWI/SNF-A) complex, which includes at least actin (ACTB), ARID1A, ARID1B/BAF250, SMARCA2, SMARCA4/BRG1, ACTL6A/BAF53, ACTL6B/BAF53B, SMARCE1/BAF57, SMARCC1/BAF155, SMARCC2/BAF170, SMARCB1/SNF5/INI1, and one or more of SMARCD1/BAF60A, SMARCD2/BAF60B, or SMARCD3/BAF60C. In muscle cells, the BAF complex also contains DPF3. Component of the SWI/SNF-B (PBAF) complex, at least composed of SMARCA4/BRG1, SMARCB1/BAF47, ACTL6A/BAF53A or ACTL6B/BAF53B, SMARCE1/BAF57, SMARCD1/BAF60A, SMARCD2/BAF60B, perhaps SMARCD3/BAF60C, SMARCC1/BAF155, SMARCC2/BAF170, PB1/BAF180, ARID2/BAF200, ARID1A/BAF250A or ARID1B/BAF250B and actin. Component of a SWI/SNF-like EPAFb complex, at least composed of SMARCA4/BRG1, SMARCB1/BAF47, ACTL6A/BAF53A, SMARCE1/BAF57, SMARCD1/BAF60A, SMARCD2/BAF60B, SMARCC1/BAF155, SMARCC2/BAF170, ARID1B/BAF250B, MLLT1/ENL and actin. Component of a SWI/SNF-like complex containing ARID1A/BAF250A and ARID1B/BAF250B. Interacts through its C-terminus with SMARCA2/BRM and SMARCA4/BRG1. Interacts with SMARCC1/BAF155.,tissue specificity:Widely expressed with high levels in heart, skeletal muscle and kidney.,

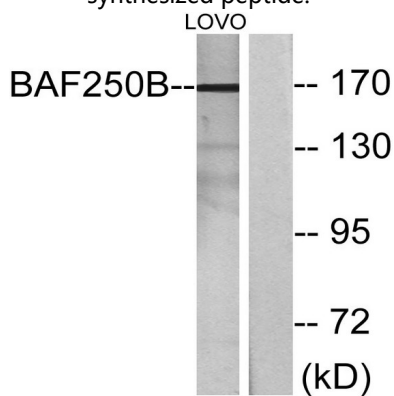
Research Area

Image Data

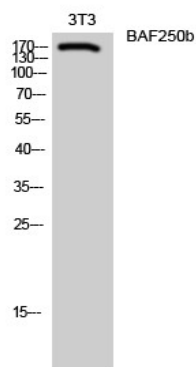
Product Name: BAF250b Rabbit Polyclonal Antibody
Catalog #: APRab07430



Immunofluorescence analysis of HUVEC cells, using BAF250B Antibody. The picture on the right is blocked with the synthesized peptide.

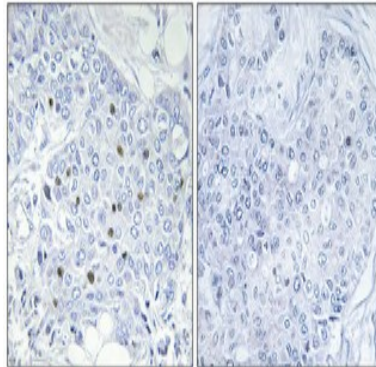


Western blot analysis of lysates from LOVO cells, using BAF250B Antibody. The lane on the right is blocked with the synthesized peptide.



Western Blot analysis of 3T3 cells using BAF250b Polyclonal Antibody diluted at 1: 1000

Product Name: BAF250b Rabbit Polyclonal Antibody
Catalog #: APRab07430



Immunohistochemical analysis of paraffin-embedded Human breast cancer. Antibody was diluted at 1:100 (4°,overnight) . High-pressure and temperature Tris-EDTA,pH8.0 was used for antigen retrieval. Negative contrl (right) obtaned from antibody was pre-absorbed by immunogen peptide.

Note

For research use only.