

Product Name: BACE Rabbit Polyclonal Antibody
Catalog #: APRab07418



Summary

Production Name	BACE Rabbit Polyclonal Antibody
Description	Rabbit Polyclonal Antibody
Host	Rabbit
Application	WB
Reactivity	Human,Mouse,Rat

Performance

Conjugation	Unconjugated
Modification	Unmodified
Isotype	IgG
Clonality	Polyclonal
Form	Liquid
Storage	Store at 4°C short term. Aliquot and store at -20°C long term. Avoid freeze/thaw cycles.
Buffer	Liquid in PBS containing 50% glycerol, 0.5% BSA and 0.02% New type preservative N.
Purification	Affinity purification

Immunogen

Gene Name	BACE1 BACE KIAA1149 Beta-secretase 1 (EC 3.4.23.46) (Aspartyl protease 2) (ASP2) (Asp 2) (Beta-site amyloid precursor protein cleaving enzyme 1) (Beta-site APP cleaving enzyme 1) (Memapsin-2)
Alternative Names	(Membrane-associated aspartic protease 2)
Gene ID	23621.0
SwissProt ID	P56817.Synthesized peptide derived from human BACE Polyclonal

Application

Dilution Ratio	WB 1:500-2000, ELISA 1:10000-20000
Molecular Weight	55kD

Background

Product Name: BACE Rabbit Polyclonal Antibody
Catalog #: APRab07418

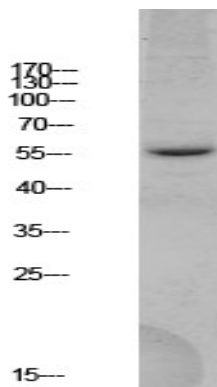


beta-secretase 1(BACE1) Homo sapiens This gene encodes a member of the peptidase A1 family of aspartic proteases. Alternative splicing results in multiple transcript variants, at least one of which encodes a preproprotein that is proteolytically processed to generate the mature protease. This transmembrane protease catalyzes the first step in the formation of amyloid beta peptide from amyloid precursor protein. Amyloid beta peptides are the main constituent of amyloid beta plaques, which accumulate in the brains of human Alzheimer's disease patients. [provided by RefSeq, Nov 2015],catalytic activity:Broad endopeptidase specificity. Cleaves Glu-Val-Asn-Leu-|-Asp-Ala-Glu-Phe in the Swedish variant of Alzheimer's amyloid precursor protein.,enzyme regulation:Inhibited by RTN3 and RTN4.,function:Responsible for the proteolytic processing of the amyloid precursor protein (APP). Cleaves at the N-terminus of the A-beta peptide sequence, between residues 671 and 672 of APP, leads to the generation and extracellular release of beta-cleaved soluble APP, and a corresponding cell-associated C-terminal fragment which is later released by gamma-secretase.,similarity:Belongs to the peptidase A1 family.,subunit:Monomer. Interacts with GGA1, GGA2 and GGA3. Interacts with RTN3 and RTN4.,tissue specificity:Brain.,

Research Area

Alzheimer's disease;

Image Data



Western blot analysis of HEK293 lysate, antibody was diluted at 1000. Secondary antibody was diluted at 1:20000

Note

For research use only.