

## Summary

<b>Production Name</b>	AVPR1A Rabbit Polyclonal Antibody
<b>Description</b>	Rabbit Polyclonal Antibody
<b>Host</b>	Rabbit
<b>Application</b>	WB
<b>Reactivity</b>	Human,Mouse

## Performance

<b>Conjugation</b>	Unconjugated
<b>Modification</b>	Unmodified
<b>Isotype</b>	IgG
<b>Clonality</b>	Polyclonal
<b>Form</b>	Liquid
<b>Storage</b>	Store at 4°C short term. Aliquot and store at -20°C long term. Avoid freeze/thaw cycles.
<b>Buffer</b>	Liquid in PBS containing 50% glycerol, 0.5% BSA and 0.02% New type preservative N.
<b>Purification</b>	Affinity purification

## Immunogen

<b>Gene Name</b>	AVPR1A
<b>Alternative Names</b>	Vasopressin V1a receptor (V1aR) (AVPR V1a) (Antidiuretic hormone receptor 1a) (Vascular/hepatic-type arginine vasopressin receptor)
<b>Gene ID</b>	552.0
<b>SwissProt ID</b>	P37288.Synthesized peptide derived from human AVPR1A. at AA range: 11-60

## Application

<b>Dilution Ratio</b>	WB 1:500-2000, ELISA 1:10000-20000
<b>Molecular Weight</b>	55kD

## Background

The protein encoded by this gene acts as receptor for arginine vasopressin. This receptor belongs to the subfamily of G-

**Product Name: AVPR1A Rabbit Polyclonal Antibody**  
**Catalog #: APRab07383**

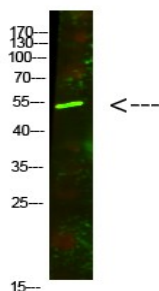


protein coupled receptors which includes AVPR1B, V2R and OXT receptors. Its activity is mediated by G proteins which stimulate a phosphatidylinositol-calcium second messenger system. The receptor mediates cell contraction and proliferation, platelet aggregation, release of coagulation factor and glycogenolysis. [provided by RefSeq, Jul 2008],function:Receptor for arginine vasopressin. The activity of this receptor is mediated by G proteins which activate a phosphatidyl-inositol-calcium second messenger system. Has been involved in social behaviors, including affiliation and attachment.,miscellaneous:Differences in regional receptor expression in the brain as well as differences in social behavior may result from a highly variable repetitive sequence in the 5' flanking region of AVPR1A. One such allelic variant has been linked to autism.,similarity:Belongs to the G-protein coupled receptor 1 family.,

## Research Area

Calcium;Neuroactive ligand-receptor interaction;Vascular smooth muscle contraction;

## Image Data



Western Blot analysis of mouse-lung cells using primary antibody diluted at 1:500 (4°C overnight) . Secondary antibody:  
Goat Anti-rabbit IgG IRDye 800 ( diluted at 1:5000, 25°C, 1 hour)

## Note

For research use only.