

## Summary

<b>Production Name</b>	ATP5G3 Rabbit Polyclonal Antibody
<b>Description</b>	Rabbit Polyclonal Antibody
<b>Host</b>	Rabbit
<b>Application</b>	IHC,IF,ELISA
<b>Reactivity</b>	Human,Rat

## Performance

<b>Conjugation</b>	Unconjugated
<b>Modification</b>	Unmodified
<b>Isotype</b>	IgG
<b>Clonality</b>	Polyclonal
<b>Form</b>	Liquid
<b>Storage</b>	Store at 4°C short term. Aliquot and store at -20°C long term. Avoid freeze/thaw cycles.
<b>Buffer</b>	Liquid in PBS containing 50% glycerol, 0.5% BSA and 0.02% New type preservative N.
<b>Purification</b>	Affinity purification

## Immunogen

<b>Gene Name</b>	ATP5G3
<b>Alternative Names</b>	ATP5G3; ATP synthase lipid-binding protein; mitochondrial; ATP synthase proteolipid P3; ATPase protein 9; ATPase subunit c
<b>Gene ID</b>	518.0
<b>SwissProt ID</b>	P48201.The antiserum was produced against synthesized peptide derived from human ATP5G3. AA range:1-50

## Application

<b>Dilution Ratio</b>	IHC 1:100 - 1:300. IF 1:200 - 1:1000. ELISA: 1:40000. Not yet tested in other applications.
<b>Molecular Weight</b>	

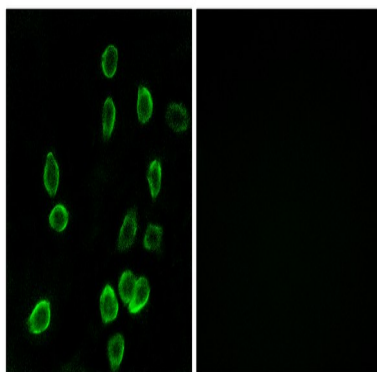
## Background

This gene encodes a subunit of mitochondrial ATP synthase. Mitochondrial ATP synthase catalyzes ATP synthesis, utilizing an electrochemical gradient of protons across the inner membrane during oxidative phosphorylation. ATP synthase is composed of two linked multi-subunit complexes: the soluble catalytic core, F<sub>1</sub>, and the membrane-spanning component, F<sub>0</sub>, comprising the proton channel. The catalytic portion of mitochondrial ATP synthase consists of 5 different subunits (alpha, beta, gamma, delta, and epsilon) assembled with a stoichiometry of 3 alpha, 3 beta, and a single representative of the other 3. The proton channel seems to have nine subunits (a, b, c, d, e, f, g, F<sub>6</sub> and 8). This gene is one of three genes that encode subunit c of the proton channel. Each of the three genes have distinct mitochondrial import sequences but encode the identical disease: This protein is the major protein stored in the storage bodies of animals or humans affected with ceroid lipofuscinosis (Batten disease).,function:Mitochondrial membrane ATP synthase (F<sub>1</sub>)F<sub>0</sub> ATP synthase or Complex V) produces ATP from ADP in the presence of a proton gradient across the membrane which is generated by electron transport complexes of the respiratory chain. F-type ATPases consist of two structural domains, F<sub>1</sub> - containing the extramembraneous catalytic core and F<sub>0</sub> - containing the membrane proton channel, linked together by a central stalk and a peripheral stalk. During catalysis, ATP synthesis in the catalytic domain of F<sub>1</sub> is coupled via a rotary mechanism of the central stalk subunits to proton translocation. Part of the complex F<sub>0</sub> domain. A homomeric c-ring of probably 10 subunits is part of the complex rotary element.,miscellaneous:There are three genes which encode the mitochondrial ATP synthase proteolipid and they specify precursors with different import sequences but identical mature proteins.,similarity:Belongs to the ATPase C chain family.,subunit:F-type ATPases have 2 components, CF<sub>1</sub> - the catalytic core - and CF<sub>0</sub> - the membrane proton channel.,subunit:F-type ATPases have 2 components, CF<sub>1</sub> - the catalytic core - and CF<sub>0</sub> - the membrane proton channel. CF<sub>1</sub> has five subunits: alpha(3), beta(3), gamma(1), delta(1), epsilon(1). CF<sub>0</sub> has three main subunits: a, b and c.,

## Research Area

Oxidative phosphorylation;Alzheimer's disease;Parkinson's disease;Huntington's disease;

## Image Data

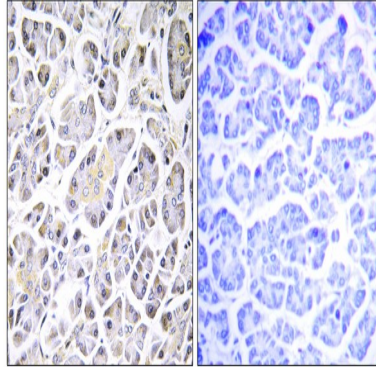


Immunofluorescence analysis of A549 cells, using ATP5G3 Antibody. The picture on the right is blocked with the synthesized

**Product Name: ATP5G3 Rabbit Polyclonal Antibody**  
**Catalog #: APRab07333**



peptide.



Immunohistochemistry analysis of paraffin-embedded human pancreas tissue, using ATP5G3 Antibody. The picture on the right is blocked with the synthesized peptide.

**Note**

For research use only.